

Standard Catalog of<sup>®</sup>  
**WORLD  
COINS**

**Seventeenth Century  
1601-1700**



---

**Colin R. Bruce II**  
Senior Editor

**Thomas Michael**  
Market Analyst

**Harry Miller**  
U.S. Market Analyst

**George Cuhaj**  
Editor

**Merna Dudley**  
Coordinating Editor

**Deborah McCue**  
Database Specialist

**Randy Thern**  
Numismatic Cataloging Supervisor

---

***Special Contributors***

**Al Boulanger**      **Craig Keplinger**  
**Robert Mish**      **Paul Montz**  
**N. Douglas Nicol**      **Erik J. van Loon**

**Bullion Value (BV) Market Valuations**

Valuations for all platinum, gold, palladium and silver coins of the more common, basically bullion types, or those possessing only modest numismatic premiums are presented in this edition based on the market levels of:

**\$950 per ounce for gold**

**\$18.50 per ounce for silver**



Iraq, historically known as Mesopotamia, is located in the Near East and is bordered by Kuwait, Iran, Turkey, Syria, Jordan and Saudi Arabia. Mesopotamia was the site of a number of flourishing civilizations of antiquity - Sumeria, Assyria, Babylonia, Parthia, Persia and the Biblical cities of Ur, Nineveh and Babylon. Desired because of its favored location, which embraced the fertile alluvial plains of the Tigris and Euphrates Rivers, Mesopotamia - 'land between the rivers' - was conquered by Cyrus the Great of Persia, Alexander of Macedonia and by Arabs who made the legendary city of Baghdad the capital of the ruling caliphate. Suleiman the Magnificent conquered Mesopotamia for Turkey in 1534, and it formed part of the Ottoman Empire until 1623, and from 1638 to 1917

**RULER**  
Ottoman, until 1917

### MESOPOTAMIA Ottoman Empire

**MONETARY SYSTEM**  
40 Para = 1 Piastre (Kurus)  
**MINT NAMES**

Baghdad بغداد

al-Basrah (Basra) البصرة

al-Hille الحلة

### Mehmed III AH1003-1012 / 1595-1603AD

#### HAMMERED COINAGE

KM# 2 DIRHEM (Shahi)						
4.6200 g., Silver						
Date	Mintage	VG	F	VF	XF	Unc
AH100(3)	—	—	—	—	—	—

KM# 3 DIRHEM (Shahi)						
3.0000 g., Silver						
Date	Mintage	VG	F	VF	XF	Unc
AH1003	—	30.00	60.00	100	175	—

KM# 5 ALTIN						
3.4500 g., Gold NOTE: 2 varieties exist.						
Date	Mintage	VG	F	VF	XF	Unc
AH1003	—	75.00	150	250	350	—

KM# 6 SULTANI						
3.5000 g., Gold						
Date	Mintage	VG	F	VF	XF	Unc
AH1003 Rare	—	—	—	—	—	—

### Ahmed I AH1012-1026 / 1603-1617AD

#### HAMMERED COINAGE

KM# 8 DIRHEM (Shahi)						
Silver Obv: 5-line inscription Note: Weight varies 4.07 - 4.82 grams.						
Date	Mintage	VG	F	VF	XF	Unc
AH1012	—	—	—	—	—	—

KM# 9 SULTANI						
3.3500 g., Gold						
Date	Mintage	VG	F	VF	XF	Unc
AH1012	—	100	150	250	350	—

### Mustafa I AH1026-1027/1617-1618AD

#### HAMMERED COINAGE

KM# 10 MANGIR						
1.0400 g., Copper, 14 mm. Obv: Toughra Rev: Mint name in ornament						
Date	Mintage	VG	F	VF	XF	Unc
ND	—	—	—	—	—	—

Date	Mintage	VG	F	VF	XF	Unc
AH1110	—	10.00	25.00	36.00	48.00	—
AH1112	—	10.00	25.00	36.00	48.00	—

#### Eravan

KM# 252 2 SHAHI (Mahmudi)						
3.6900 g., Silver Note: Type A.						
Date	Mintage	VG	F	VF	XF	Unc
AH1106	—	19.00	48.00	65.00	80.00	—

KM# 257.3 2 SHAHI (Mahmudi)						
3.6900 g., Silver Note: Type B.						
Date	Mintage	VG	F	VF	XF	Unc
1107	—	30.00	42.00	55.00	70.00	—

#### Isfahan

KM# 257.1 2 SHAHI (Mahmudi)						
3.6900 g., Silver Note: Type B.						
Date	Mintage	VG	F	VF	XF	Unc
AH1112	—	30.00	42.00	55.00	70.00	—

#### Tiflis

KM# 257.2 2 SHAHI (Mahmudi)						
3.6900 g., Silver Note: Type B.						
Date	Mintage	VG	F	VF	XF	Unc
AH1107	—	12.00	30.00	42.00	55.00	—



#### Eravan

KM# 253.1 ABBASI						
9.2400 g., Silver Note: Type A.						
Date	Mintage	VG	F	VF	XF	Unc
AH1106	—	7.00	18.00	30.00	42.00	—
AH1107	—	7.00	18.00	30.00	42.00	—

#### Ganjah

KM# 253.2 ABBASI						
9.2400 g., Silver Note: Type A.						
Date	Mintage	VG	F	VF	XF	Unc
AH1105	—	10.00	25.00	36.00	48.00	—

#### Isfahan

KM# 253.3 ABBASI						
9.2400 g., Silver Note: Type A.						
Date	Mintage	VG	F	VF	XF	Unc
AH1106	—	6.00	15.00	25.00	36.00	—
AH1107	—	6.00	15.00	25.00	36.00	—

#### Nakhchawan

KM# 253.4 ABBASI						
9.2400 g., Silver Note: Type A.						
Date	Mintage	VG	F	VF	XF	Unc
AH1106	—	7.00	18.00	30.00	42.00	—
AH1107	—	7.00	18.00	30.00	42.00	—

#### Qazvin

KM# 253.5 ABBASI						
9.2400 g., Silver Note: Type A.						
Date	Mintage	VG	F	VF	XF	Unc
AH1105	—	9.00	22.50	33.00	45.00	—

#### Rasht

KM# 253.6 ABBASI						
9.2400 g., Silver Note: Type A.						
Date	Mintage	VG	F	VF	XF	Unc
AH1105	—	10.00	25.00	36.00	48.00	—

#### Tabriz

KM# 253.7 ABBASI						
9.2400 g., Silver Note: Type A.						
Date	Mintage	VG	F	VF	XF	Unc
AH1106	—	6.00	15.00	25.00	36.00	—
AH1107	—	6.00	15.00	25.00	36.00	—

#### Tiflis

KM# 253.8 ABBASI						
9.2400 g., Silver Note: Type A.						
Date	Mintage	VG	F	VF	XF	Unc
AH1106	—	6.00	15.00	25.00	36.00	—
AH1107	—	6.00	15.00	25.00	36.00	—

#### Eravan

KM# 258.1 ABBASI (type 258)						
9.2400 g., Silver Note: Type B.						
Date	Mintage	VG	F	VF	XF	Unc
AH1108	—	5.00	12.00	18.00	30.00	—
AH1109	—	5.00	12.00	18.00	30.00	—
AH1110	—	5.00	12.00	18.00	30.00	—
AH1111	—	5.00	12.00	18.00	30.00	—
AH1112	—	5.00	12.00	18.00	30.00	—

#### Ganjah

KM# 258.2 ABBASI (type 258)						
9.2400 g., Silver Note: Type B.						
Date	Mintage	VG	F	VF	XF	Unc
AH1107	—	6.00	15.00	20.00	33.00	—
AH1108	—	6.00	15.00	20.00	33.00	—
AH1110	—	6.00	15.00	20.00	33.00	—
AH1111	—	6.00	15.00	20.00	33.00	—
AH1112	—	6.00	15.00	20.00	33.00	—

#### Isfahan

KM# 258.4 ABBASI (type 258)						
9.2400 g., Silver Note: Type B.						
Date	Mintage	VG	F	VF	XF	Unc
AH1107	—	5.00	12.00	18.00	30.00	—
AH1108	—	5.00	12.00	18.00	30.00	—
AH1109	—	5.00	12.00	18.00	30.00	—
AH1111	—	5.00	12.00	18.00	30.00	—
AH1112	—	5.00	12.00	18.00	30.00	—

#### Nakhchawan

KM# 258.5 ABBASI (type 258)						
9.2400 g., Silver Note: Type B.						
Date	Mintage	VG	F	VF	XF	Unc
AH1107	—	7.00	18.00	30.00	42.00	—
AH1108	—	7.00	18.00	30.00	42.00	—
AH1110	—	7.00	18.00	30.00	42.00	—
AH1111	—	7.00	18.00	30.00	42.00	—

#### Rasht

KM# 258.6 ABBASI (type 258)						
9.2400 g., Silver Note: Type B.						
Date	Mintage	VG	F	VF	XF	Unc
AH1109	—	7.00	18.00	30.00	42.00	—

#### Tabriz

KM# 258.7 ABBASI (type 258)						
9.2400 g., Silver Note: Type B.						
Date	Mintage	VG	F	VF	XF	Unc
AH1108	—	5.00	12.00	18.00	30.00	—
AH1110	—	5.00	12.00	18.00	30.00	—

#### Tiflis

KM# 258.8 ABBASI (type 258)						
9.2400 g., Silver Note: Type B.						
Date	Mintage	VG	F	VF	XF	Unc
AH1107	—	5.00	12.00	18.00	30.00	—
AH1108	—	5.00	12.00	18.00	30.00	—
AH1109	—	5.00	12.00	18.00	30.00	—
AH1110	—	5.00	12.00	18.00	30.00	—
AH1111	—	5.00	12.00	18.00	30.00	—
AH1112	—	5.00	12.00	18.00	30.00	—

#### Eravan

KM# 259.1 5 SHAHI						
9.2400 g., Silver Note: Type B.						
Date	Mintage	VG	F	VF	XF	Unc
AH1108	—	12.00	30.00	48.00	65.00	—

#### Ganjah

KM# 259.2 5 SHAHI						
9.2400 g., Silver Note: Type B.						
Date	Mintage	VG	F	VF	XF	Unc
AH1107	—	10.00	25.00	42.00	60.00	—
AH1108	—	10.00	25.00	42.00	60.00	—

#### Isfahan

KM# 259.3 5 SHAHI						
9.2400 g., Silver Note: Type B.						
Date	Mintage	VG	F	VF	XF	Unc
AH1107	—	10.00	25.00	42.00	60.00	—

#### Tabriz

KM# 259.4 5 SHAHI						
9.2400 g., Silver Note: Type B.						
Date	Mintage	VG	F	VF	XF	Unc
AH1107	—	12.00	30.00	48.00	65.00	—

#### Isfahan

KM# 261 5 ABBASI (20 Shahi)						
36.9600 g., Silver Note: Type B.						
Date	Mintage	VG	F	VF	XF	Unc
AH1109 Rare	—	—	—	—	—	—

**Osman II**  
AH1027-1031 / 1618-1622AD

**HAMMERED COINAGE**

**KM# 12 DIRHEM (Shahi)**

Silver **Obv:** 5-line inscription **Note:** Weight varies 4.26 - 4.70 grams.

Date	Mintage	VG	F	VF	XF	Unc
AHxxxx	—	—	—	—	—	—

**Murad IV**  
AH1032-1049 / 1623-1640AD

**HAMMERED COINAGE**



**KM# 15 DIRHEM (Shahi)**

2.9600 g., Silver **Obv:** Toughra **Rev:** 5-line inscription

Date	Mintage	VG	F	VF	XF	Unc
AH1048	—	50.00	75.00	100	150	—

**KM# 17 SULTANI**

Date	Mintage	Good	VG	F	VF	XF
AH1043 Rare	—	—	—	—	—	—



**KM# 18 SULTANI**

Date	Mintage	VG	F	VF	XF	Unc
AH1049	—	—	—	—	—	—

**KM# 32 SULTANI**

Date	Mintage	VG	F	VF	XF	Unc
AH1058	—	—	—	—	—	—

**Ibrahim**  
AH1049-1058 / 1640-1648AD

**HAMMERED COINAGE**

**KM# 19 MANGIR**

1.8200 g., Copper **Obv:** Ornaments **Note:** Prev. KM#24.

Date	Mintage	VG	F	VF	XF	Unc
AH1049	—	20.00	30.00	50.00	75.00	—

**KM# A20 MANGIR**

Date	Mintage	VG	F	VF	XF	Unc
AH1058	—	—	—	—	—	—

**KM# B20 AKCE**

Date	Mintage	VG	F	VF	XF	Unc
AH1049	—	—	—	—	—	—

**KM# 20 1/2 DIRHEM (1/2 Shahi)**

Date	Mintage	VG	F	VF	XF	Unc
AHxx4x	—	—	—	—	—	—

**KM# 22 DIRHEM (Shahi)**

Date	Mintage	VG	F	VF	XF	Unc
AH10xx	—	—	—	—	—	—

**KM# 23 DIRHEM (Shahi)**

Date	Mintage	VG	F	VF	XF	Unc
AH1049	—	7.00	12.00	20.00	40.00	—

**Note:** Five varieties exist

**Mehmed IV**  
AH1058-1099 / 1648-1687AD

**HAMMERED COINAGE**

**KM# 25 MANGIR**

Date	Mintage	VG	F	VF	XF	Unc
AH1058 Rare	—	—	—	—	—	—

**KM# 33 DIRHEM (Shahi)**

Date	Mintage	VG	F	VF	XF	Unc
AH1058	—	150	200	300	450	—

**KM# 26 DIRHEM (Shahi)**

Silver **Obv:** 4-line inscription **Rev:** 5-line inscription **Note:** Weight varies: 2.59-2.90 grams.

Date	Mintage	VG	F	VF	XF	Unc
AH1058	—	20.00	30.00	40.00	60.00	—

**KM# 27 DIRHEM (Shahi)**

Silver **Obv:** Toughra **Rev:** 5-line inscription **Note:** Weight varies: 2.77-2.90 grams.

Date	Mintage	VG	F	VF	XF	Unc
AH1058	—	20.00	30.00	40.00	60.00	—

**KM# 28 DIRHEM (Shahi)**

Silver **Rev:** Legend: Around inner circle with minname **Note:** Weight varies: 2.77-2.90 grams.

Date	Mintage	VG	F	VF	XF	Unc
AH1058	—	20.00	30.00	45.00	65.00	—

**KM# 29 DIRHEM (Shahi)**

Silver **Obv:** 3-line inscription **Rev:** 3-line inscription **Note:** Weight varies: 2.77-2.90 grams.

Date	Mintage	VG	F	VF	XF	Unc
AH1059	—	15.00	25.00	30.00	55.00	—

**KM# 30 DIRHEM (Shahi)**

Silver **Rev:** 4-line inscription **Note:** Weight varies: 2.77-2.90 grams.

Date	Mintage	VG	F	VF	XF	Unc
AH1062	—	40.00	60.00	100	150	—

**Suleyman II**  
AH1099-1102 / 1687-1691AD

**HAMMERED COINAGE**

**KM# 34 MANGIR**

Date	Mintage	VG	F	VF	XF	Unc
AH(1)099	—	—	—	—	—	—

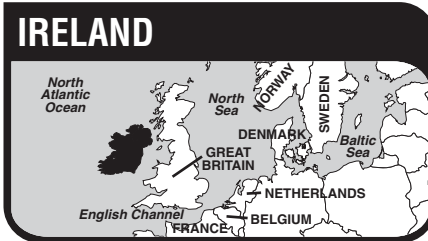


**KM# 36 DIRHEM (Shahi)**

Date	Mintage	VG	F	VF	XF	Unc
AH1099 Rare	—	—	—	—	—	—

**KM# 37 LARIN**

Date	Mintage	VG	F	VF	XF	Unc
ND Rare	—	—	—	—	—	—



Ireland, the island located in the Atlantic Ocean west of Great Britain, was settled by a race of tall, red-haired Celts from Gaul about 400 BC. They assimilated the native Erainn and Picts and established a Gaelic civilization. After the arrival of St. Patrick in 432 AD, Ireland evolved into a center of Latin learning, which sent missionaries to Europe and possibly North America. In 1154, Pope Adrian IV gave all of Ireland to English King Henry II to administer as a Papal fief. Because of the enactment of anti-Catholic laws and the awarding of vast tracts of Irish land to Protestant absentee landowners, English control did not become reasonably absolute until 1800 when England and Ireland became the "United Kingdom of Great Britain and Ireland". Religious freedom was restored to the Irish in 1829, but agitation for political autonomy continued until the Irish Free State was established as a Dominion on Dec. 6, 1921 while Northern Ireland remained under the British rule.

**RULER**  
British to 1921

**MONETARY SYSTEM**

4 Farthings = 1 Penny  
12 Pence = 1 Shilling  
5 Shillings = 1 Crown

**UNITED KINGDOM**  
**STANDARD COINAGE**



**KM# 20.1 FARTHING**

Tin Plated Copper **Obv:** Crown on crossed sceptres, titles of James I **Rev:** Crowned harp **Note:** Small "Harrington" Issue. No mintmark.

Date	Mintage	VG	F	VF	XF	Unc
ND(1613)	—	40.00	9.00	375	750	—

**KM# 20.2 FARTHING**

Tin Plated Copper **Obv:** Crown on crossed sceptres, titles of James I **Rev:** Crowned harp **Note:** Small "Harrington" Issue; mintmark: A.

Date	Mintage	VG	F	VF	XF	Unc
ND(1613)	—	40.00	90.00	375	750	—

**KM# 20.3 FARTHING**

Tin Plated Copper **Obv:** Crown on crossed sceptres, titles of James I **Rev:** Crowned harp **Note:** Small "Harrington" Issue; mintmark: B.

Date	Mintage	VG	F	VF	XF	Unc
ND(1613)	—	40.00	90.00	375	750	—

**KM# 20.4 FARTHING**

Tin Plated Copper **Obv:** Crown on crossed sceptres, titles of James I **Rev:** Crowned harp **Note:** Small "Harrington" Issue; mintmark: C.

Date	Mintage	VG	F	VF	XF	Unc
ND(1613)	—	40.00	90.00	375	750	—

**KM# 20.5 FARTHING**

Tin Plated Copper **Obv:** Crown on crossed sceptres, titles of James I **Rev:** Crowned harp **Note:** Small "Harrington" Issue; mintmark: D.

Date	Mintage	VG	F	VF	XF	Unc
ND(1613)	—	40.00	90.00	375	750	—

**KM# 20.6 FARTHING**

Tin Plated Copper **Obv:** Crown on crossed sceptres, titles of James I **Rev:** Crowned harp **Note:** Small "Harrington" Issue; mintmark: F.

Date	Mintage	VG	F	VF	XF	Unc
ND(1613)	—	40.00	90.00	375	750	—

**KM# 20.7 FARTHING**

Tin Plated Copper **Obv:** Crown on crossed sceptres, titles of James I **Rev:** Crowned harp **Note:** Small "Harrington" Issue; mintmark: L.

Date	Mintage	VG	F	VF	XF	Unc
ND(1613)	—	40.00	90.00	375	750	—

**KM# 20.8 FARTHING**

Tin Plated Copper **Obv:** Crown on crossed sceptres, titles of James I **Rev:** Crowned harp **Note:** Small "Harrington" Issue; mintmark: Crescent.

Date	Mintage	VG	F	VF	XF	Unc
ND(1613)	—	40.00	90.00	375	750	—

**KM# 20.9 FARTHING**

Tin Plated Copper **Obv:** Crown on crossed sceptres, titles of James I **Rev:** Crowned harp **Note:** Small "Harrington" Issue; mintmark: Ermine.

Date	Mintage	VG	F	VF	XF	Unc
ND(1613)	—	40.00	90.00	375	750	—

**KM# 20.10 FARTHING**

Tin Plated Copper **Obv:** Crown on crossed sceptres, titles of James I **Rev:** Crowned harp **Note:** Small "Harrington" Issue; mintmark: Millrind.

Date	Mintage	VG	F	VF	XF	Unc
ND(1613)	—	40.00	90.00	375	750	—

**KM# 20.11 FARTHING**

Tin Plated Copper **Obv:** Crown on crossed sceptres, titles of James I **Rev:** Crowned harp **Note:** Small "Harrington" Issue; mintmark: Mullet.

Date	Mintage	VG	F	VF	XF	Unc
ND(1613)	—	40.00	90.00	375	750	—

**KM# 20.12 FARTHING**

Tin Plated Copper **Obv:** Crown on crossed sceptres, titles of James I **Rev:** Crowned harp **Note:** Small "Harrington" Issue; mintmark: Pellet.

Date	Mintage	VG	F	VF	XF	Unc
ND(1613)	—	40.00	90.00	375	750	—

**KM# 20.13 FARTHING**

Tin Plated Copper **Obv:** Crown on crossed sceptres, titles of James I **Rev:** Crowned harp **Note:** Small "Harrington" Issue; mintmark: Trefoil.

Date	Mintage	VG	F	VF	XF	Unc
ND(1613)	—	40.00	90.00	375	750	—



**KM# 21.1 FARTHING**

Copper **Obv:** Crown on crossed sceptres, titles of James I **Rev:** Crowned harp **Note:** Normal "Harrington" Issue; mintmark: Cinquefoil.

Date	Mintage	VG	F	VF	XF	Unc
ND(1613)	—	18.00	37.50	95.00	190	—

**KM# 21.2 FARTHING**

Copper **Obv:** Crown on crossed sceptres, titles of James I **Rev:** Crowned harp **Note:** Normal "Harrington" Issue; mintmark: Lis.

Date	Mintage	VG	F	VF	XF	Unc
ND(1613)	—	18.00	37.50	95.00	190	—

Standard Catalog of®

# WORLD COINS

1701-1800

5th Edition

GEORGE S. CUHAJ, EDITOR • THOMAS MICHAEL, MARKET ANALYST



**20,000**  
Actual-Size  
Illustrations

**The World's Best-Selling Coin Books**



**Tabriz**

**KM# 739.8 TOMAN**  
6.1400 g., Gold **Note:** Type S.

Date	Mintage	F	VF	XF	Unc	BU
AH1214	—	265	350	425	—	—

**Tehran**

**KM# 739.9 TOMAN**  
6.1400 g., Gold **Note:** Type S.

Date	Mintage	F	VF	XF	Unc	BU
AH1213	—	265	350	425	—	—

**Yazd**

**KM# 739.10 TOMAN**  
6.1400 g., Gold **Note:** Type S.

Date	Mintage	F	VF	XF	Unc	BU
AH1213	—	265	350	425	—	—
AH1214	—	265	350	425	—	—

**Baba Khan**  
AH1211-1212 / 1797-1798AD

(Fath ali before coronation.)  
Baba Khan was the name used by Fath'ali Shah for about 3 months prior to his official julus, or coronation. Mint premiums as for Fath'ali Shah. All known coins of Baba Khan are dated AH1212. They fall into two standards, the first based on a Rupee of 60 Nokhod (= 11.50 g), the second on a Riyal of 54 Nokhod (= 10.40 g).

Types for this reign:  
**A.** Obverse name and benediction, *al-mulk lillah al-Sultan Baba Khan* ("the kingdom is God's, Sultan Baba Khan"). Reverse, mint (sometimes with epithet) & date, with pious evocation above, *al-izzat lillah*, "God's is the glory".  
**B.** Similar to type A, but without the pious evocation above the reverse. Sometimes undated. Type B coins almost always have the mint with its epithet.  
**C.** Obverse, the Shiite formula. Reverse, mint, usually with epithet, and date. Above, in smaller letters, *Baba*

**HAMMERED COINAGE**

**KM# 658 SHAHI SEFID (White Shahi)**  
1.1500 g., Silver **Note:** Type C.

Date	Mintage	F	VF	XF	Unc	BU
AH1212	—	45.00	75.00	115.00	—	—



**Isfahan**

**KM# 654.1 SHAHI SEFID (White Shahi)**  
1.1500 g., Silver **Note:** Type B.

Date	Mintage	F	VF	XF	Unc	BU
ND(1211-12)	—	40.00	65.00	100	—	—
AH1212	—	40.00	65.00	100	—	—

**Kashan**

**KM# 654.2 SHAHI SEFID (White Shahi)**  
1.1500 g., Silver **Note:** Type B.

Date	Mintage	F	VF	XF	Unc	BU
AH1212	—	45.00	75.00	120	—	—



**KM# 659.1 1/2 RIAL**  
5.7500 g., Silver **Note:** Type C.

Date	Mintage	F	VF	XF	Unc	BU
AH1211	—	50.00	80.00	125	—	—
AH1212	—	50.00	80.00	125	—	—

**Shiraz**

**KM# 659.2 1/2 RIAL**  
5.7500 g., Silver **Note:** Type C.

Date	Mintage	F	VF	XF	Unc	BU
AH1212	—	35.00	60.00	100	—	—

**Astarabad**

**KM# 655.1 RIAL (20 Shahi)**  
11.5000 g., Silver **Note:** Type B.

Date	Mintage	F	VF	XF	Unc	BU
AH1212	—	80.00	120	200	—	—
ND	—	75.00	110	180	—	—

**Isfahan**

**KM# 655.2 RIAL (20 Shahi)**  
11.5000 g., Silver **Note:** Type B.

Date	Mintage	F	VF	XF	Unc	BU
AH1212	—	60.00	90.00	125	—	—

**Kashan**

**KM# 660.1 RIAL (20 Shahi)**  
11.5000 g., Silver **Note:** Type C.

Date	Mintage	F	VF	XF	Unc	BU
AH1212	—	70.00	120	185	—	—

**Khoy**

**KM# 655.3 RIAL (20 Shahi)**  
11.5000 g., Silver **Note:** Type B.

Date	Mintage	F	VF	XF	Unc	BU
AH1212	—	75.00	110	160	—	—



**Maragheh**

**KM# 651 RIAL (20 Shahi)**  
11.5000 g., Silver **Note:** Type A.

Date	Mintage	F	VF	XF	Unc	BU
AH1212	—	80.00	125	200	—	—

**Mazandaran**

**KM# 655.4 RIAL (20 Shahi)**  
11.5000 g., Silver **Note:** Type B.

Date	Mintage	F	VF	XF	Unc	BU
AH1211	—	75.00	110	160	—	—

**Note:** Some examples of Mazandaran AH1211 have

**Rasht**

**KM# 660.2 RIAL (20 Shahi)**  
11.5000 g., Silver **Note:** Type C.

Date	Mintage	F	VF	XF	Unc	BU
AH1212	—	70.00	120	185	—	—

**Shiraz**

**KM# 655.5 RIAL (20 Shahi)**  
11.5000 g., Silver **Note:** Type B.

Date	Mintage	F	VF	XF	Unc	BU
AH1212	—	60.00	90.00	125	—	—

**Tabriz**

**KM# 655.6 RIAL (20 Shahi)**  
11.5000 g., Silver **Note:** Type B.

Date	Mintage	F	VF	XF	Unc	BU
AH1212	—	60.00	90.00	125	—	—

**Tehran**

**KM# 660.3 RIAL (20 Shahi)**  
11.5000 g., Silver **Note:** Type C.

Date	Mintage	F	VF	XF	Unc	BU
AH1212	—	50.00	85.00	130	—	—



**Tehran**

**KM# 662 1/2 TOMAN**  
Gold **Note:** Type C. Approx. 3.4 grams.

Date	Mintage	F	VF	XF	Unc	BU
AH1212 Rare	—	—	—	—	—	—



The Republic of Iraq, historically known as Mesopotamia, is located in the Near East and is bordered by Kuwait, Iran, Turkey, Syria, Jordan and Saudi Arabia. It has area of 167,925 sq. mi. (434,920 sq. km.) and a population of 14 million. Capital: Baghdad. The economy of Iraq is based on agriculture and petroleum. Crude oil accounted for 94 percent of the exports before the war with Iran began in 1980.

Mesopotamia was the site of a number of flourishing civilizations of antiquity - Sumeria, Assyria, Babylonia, Parthia, Persia and the Biblical cities of Ur, Nineveh and Babylon. Desired because of its favored location, which embraced the fertile alluvial plains of the Tigris and Euphrates Rivers, Mesopotamia - 'land between the rivers' - was conquered by Cyrus the Great of Persia, Alexander of Macedonia and by Arabs who made the legendary city of Baghdad the capital of the ruling caliphate. Suliman the Magnificent conquered Mesopotamia for Turkey in 1534, and it formed part of the Ottoman Empire until 1623, and from 1638 to 1917. Great Britain, given a League of Nations mandate over the territory in 1920, recognized Iraq as a kingdom in 1922. Iraq became an independent constitutional monarchy presided over by the Hashemite family, direct descendants of the prophet Mohammed, in 1932. In 1958, the army-led revolution of July 14 overthrew the monarchy and proclaimed a republic.

**RULER**

Ottoman, until 1917

**MESOPOTAMIA**

**MONETARY SYSTEM**  
40 Para = 1 Piastre (Kurus)

**MINT NAME**

Baghdad	بغداد
al-Basrah (Basra)	البصرة
al-Hille	الحلة

**Mahmud I**  
1730-1754AD

**HAMMERED COINAGE**

**KM# 39 5 PARA**  
Copper **Obv:** Toughra **Rev:** Mint name

Date	Mintage	Good	VG	F	VF	XF
AH1143 (1730)	—	—	50.00	80.00	150	225



**KM# 39a 5 PARA**  
2.6400 g., Silver **Obv:** Toughra **Rev:** Duriba fi Baghdad, date

Date	Mintage	Good	VG	F	VF	XF
AH1143 (1730)	—	—	75.00	150	225	385

**Mustafa III**  
1751-1773AD

**HAMMERED COINAGE**



**KM# 42 PARA**  
Copper **Obv:** Toughra **Rev:** Duriba fi Baghdad

Date	Mintage	Good	VG	F	VF	XF
ND (1751)	—	12.00	20.00	35.00	55.00	—
AH(11)78 (1764)	—	12.00	20.00	35.00	55.00	—

**Abdul Hamid I**  
1773-1789AD

**HAMMERED COINAGE**

**KM# 45 5 PARA**  
2.1000 g., Billon **Note:** Similar to 10 Para, KM#48.1

Date	Mintage	Good	VG	F	VF	XF
AH1187/9 //9 (1780) Rare	—	—	—	—	—	—



**KM# 48.1 10 PARA**  
4.4000 g., Billon

Date	Mintage	Good	VG	F	VF	XF
AH1187/95 (1780) Rare	—	—	—	—	—	—

**KM# 48.2 10 PARA**  
2.1800 g., Billon

Date	Mintage	Good	VG	F	VF	XF
AH1187/9 (1780) Rare	—	—	—	—	—	—

Standard Catalog of®

# WORLD COINS

1801-1900

6th Edition

GEORGE S. CUHAJ, EDITOR • THOMAS MICHAEL, MARKET ANALYST



*The World's Best-Selling Coin Books*

**27,500**  
Actual-Size  
Illustrations

KM# Date Mintage Identification Mkt Val



Pn23 AH1316 — Toman. Bronze Gilt. Uniformed bust 1/4 right. Legend and value within beaded circle and wreath. KM#995. 800



Pn24 ND — 5 Krans. Silver. Uniformed bust 1/4 left. Crown above lion and sun within wreath. 1,250



Pn25 AH1318 — 5 Krans. Silver. Struck at Paris Mint. 1,850  
 Pn26 AH1319H — 1/4 Kran. —  
 Pn27 AH1319 — 250 Dinars. Silver. Plain edge. Mouzaffer profile. 550



Pn28 AH1319 — 500 Dinars. Silver. Plain edge. 700



Pn29 AH1319 — 1000 Dinars. Silver. Plain edge. 700  
 Pn30 AH1319 — 2000 Dinars. Silver. Plain edge. 800



Pn31 AH1319 — 5000 Dinars. Silver. Plain edge. 1,750  
 Pn32 AH1319 — 1/4 Toman. 300

## GANJA KHANATE KHANATE HAMMERED COINAGE

**KM# 722 1/2 ABBASI**  
 1.5000 g., Silver **Obv. Inscription:** "Fath Ali Shah" **Note:** Rectangular flan.

Date	Mintage	VG	F	VF	XF	Unc
AH1216	Rare	—	—	—	—	—

**KM# 723 ABBASI**  
 3.0000 g., Silver **Obv. Inscription:** "Fath Ali Shah" **Note:** Round flan.

Date	Mintage	VG	F	VF	XF	Unc
AH1217	Rare	—	—	—	—	—



**Panahabad**  
**KM# 728 ABBASI**  
 Silver **Obv. Inscription:** "Fath Ali Shah" **Note:** Generally found looped or holed; about 4.5 grams.

Date	Mintage	VG	F	VF	XF	Unc
AH1216	—	—	60.00	90.00	145	—

## KANGUN KHANATE KHANATE

### Anonymous Shaikhs HAMMERED COINAGE

**Kangun**  
**KM# 680 FALUS**  
 5.1800 g., Copper, 20 mm. **Obv:** Inscription within circle  
**Obv. Inscription:** "Kangu/n" **Rev:** Inscription partially retrograde for 1228 within circle **Rev. Inscription:** "Ra'ij / 1668"

Date	Mintage	Good	VG	F	VF	XF
AH1228	—	—	—	—	—	—

**KM# 679 FALUS**  
 Copper, 18 mm. **Obv. Inscription:** Kangun **Rev:** Inscription partially retrograde for 1228 **Rev. Inscription:** "1668"

Date	Mintage	Good	VG	F	VF	XF
AH1228	—	—	—	—	—	—

**KM# 802 FALUS**  
 Copper, 18 mm. **Obv. Inscription:** "Kangun / 1255 / Sana"

Date	Mintage	Good	VG	F	VF	XF
AH1255	—	—	—	—	—	—

**KM# 803 FALUS**  
 Copper, 15 mm. **Obv. Inscription:** "Kangun / duriba" within circle **Rev. Inscription:** "1266" within circle

Date	Mintage	Good	VG	F	VF	XF
AH1266	—	—	—	—	—	—

**KM# 837 FALUS**  
 Copper, 15 mm. **Obv. Inscription:** "Kangun / duriba / 1271" **Rev:** Hexagram with dots within outer angles **Rev. Inscription:** "711" **Note:** Weight varies: 1.56-3.21 g.

Date	Mintage	Good	VG	F	VF	XF
AH1271	—	—	—	—	—	—

**KM# 838 FALUS**  
 Copper, 16 mm. **Obv. Inscription:** "Kangun / duriba / 1274" **Rev:** Hexagram with dots within outer angles **Note:** Weight varies: 1.56-3.21 g.

Date	Mintage	Good	VG	F	VF	XF
AH1274	—	—	—	—	—	—

## Madhkur AH1283-1297 / 1866-1880AD HAMMERED COINAGE

**Kangun**  
**KM# 875 FALUS**  
 Copper, 15 mm. **Obv:** Two leaves **Obv. Inscription:** "Kangun" **Rev. Inscription:** "12 / duriba / 88"

Date	Mintage	Good	VG	F	VF	XF
AH1288	—	—	—	—	—	—

## KARABAKH KHANATE KHANATE COUNTERMARKED COINAGE

**KM# 730 ABBASI**  
 Silver **Obv. Legend:** "Fath Ali Shah" **Note:** Countermark: "Zarb Tehran 1229" On various Rials of the same ruler.

CM Date	Host Date	Good	VG	F	VF	XF
AH1229	—	—	36.00	48.00	65.00	—

## SHEKI KHANATE KHANATE HAMMERED COINAGE

**KM# 726 ABBASI**  
 Silver **Obv. Inscription:** "Fath Ali Shah" **Note:** Weight about 1.8 grams.

Date	Mintage	VG	F	VF	XF	Unc
AH1241	—	—	75.00	115	150	—
AH1242	—	—	75.00	115	150	—



The Republic of Iraq, historically known as Mesopotamia, is located in the Near East and is bordered by Kuwait, Iran, Turkey, Syria, Jordan and Saudi Arabia. Capital: Baghdad.

Mesopotamia was the site of a number of flourishing civilizations of antiquity - Sumeria, Assyria, Babylonia, Parthia, Persia and the Biblical cities of Ur, Nineveh and Babylon. Desired because of its favored location, which embraced the fertile alluvial plains of the Tigris and Euphrates Rivers, Mesopotamia - 'land between the rivers'- was conquered by Cyrus the Great of Persia, Alexander of Macedonia and by Arabs who made the legendary city of Baghdad the capital of the ruling caliphate. Suleiman the Magnificent conquered Mesopotamia for Turkey in 1534, and it formed part of the Ottoman Empire until 1623, and from 1638 to 1917. Great Britain, given a League of Nations mandate over the territory in 1920, recognized Iraq as a kingdom in 1922. Iraq became an independent constitutional monarchy presided over by the Hashemite family, direct descendants of the prophet Mohammed, in 1932. In 1958, the army-led revolution of July 14 overthrew the monarchy and proclaimed a republic.

**RULER**  
 Ottoman, until 1917

## MESOPOTAMIA Ottoman Empire

**MONETARY SYSTEM**  
 40 Para = 1 Piastre (Kurus)

**MINTS**

Baghdad	بغداد
al-Basrah (Basra)	البصرة
al-Hille	الحلة

## Mahmud II 1808-1839AD

### HAMMERED COINAGE



**KM# A75 PARA**  
 Copper **Obv:** Toughra **Rev:** Mint name, date

Date	Mintage	Good	VG	F	VF	XF
AH1223 (1808)	—	15.00	30.00	50.00	—	—



**KM# 74 HAYRIYE ALTIN**  
1.4000 g., Gold **Note:** Size varies: 20-21mm.  
**Date** **Mintage** **Good** **VG** **F** **VF** **XF**  
AH1223//25 (1831) — — 175 350 600 1,000

**KM# 63 2 PARA**  
Copper **Rev:** Year above mint name **Note:** Weight varies: 4.7-5.7 g.  
**Date** **Mintage** **Good** **VG** **F** **VF** **XF**  
ND(1808-09) (1808) — 25.00 40.00 60.00 100 —  
AH1223//18 (1824) — 25.00 40.00 60.00 100 —  
AH1223//26 (1832) — 25.00 40.00 60.00 100 —



**KM# 50 2 PARA**  
Billon **Obv:** Toughra **Rev:** Reign year, mint name and date  
**Date** **Mintage** **Good** **VG** **F** **VF** **XF**  
AH1223//12 (1818) — 22.50 45.00 75.00 — —



**KM# 54 2 PARA**  
Copper **Obv:** Flower to right of toughra **Rev:** Mint name, date  
**Note:** Weight varies: 4.7-5.7 g.  
**Date** **Mintage** **Good** **VG** **F** **VF** **XF**  
AH1238 (1822) — 22.50 45.00 75.00 — —  
AH1240 (1824) — 22.50 45.00 75.00 — —  
AH1241 (1825) — 22.50 45.00 75.00 — —  
AH1244 (1828) — 22.50 45.00 75.00 — —

**KM# 59 2 PARA**  
0.8000 g., Billon, 18 mm.  
**Date** **Mintage** **Good** **VG** **F** **VF** **XF**  
AH1223//17 (1823) — 25.00 50.00 80.00 — —

**KM# 80 2 PARA**  
Copper **Obv:** Ornament to right of toughra **Rev:** Mint name, date  
**Note:** Size varies: 16-19mm.  
**Date** **Mintage** **Good** **VG** **F** **VF** **XF**  
AH1239 (1823) — 25.00 50.00 85.00 — —  
AH1240 (1824) — 15.00 30.00 50.00 — —  
AH1241//16 (1825) — — — — — —  
**Note:** Reported, not confirmed



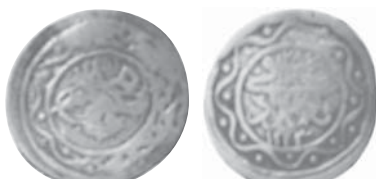
**KM# 69 2 PARA**  
Copper **Obv:** Star and crescent within Star of David **Rev:** Mint name, date **Note:** Size varies: 17-25mm.  
**Date** **Mintage** **Good** **VG** **F** **VF** **XF**  
AH1223//23 (1829) — 33.75 70.00 115 — —  
AH1223//25 (1831) — 33.75 70.00 115 — —



**KM# 70 2 PARA**  
Copper **Obv:** Star and crescent within Star of David **Rev:** Reign year above mint name **Note:** Size varies: 17-25mm.  
**Date** **Mintage** **Good** **VG** **F** **VF** **XF**  
AH1223//25 (1831) — 33.75 70.00 115 — —  
**KM# 71 2 PARA**  
Copper **Obv:** Star of David **Rev:** Mint name and date **Note:** Size varies: 17-25mm.  
**Date** **Mintage** **Good** **VG** **F** **VF** **XF**  
AH1223//25 (1831) — — — — — —



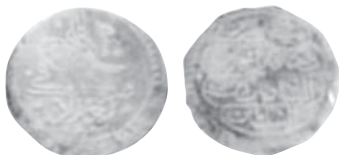
**KM# 72 2 PARA**  
Copper **Obv:** Star of David **Rev:** Mint name, date  
**Date** **Mintage** **Good** **VG** **F** **VF** **XF**  
AH1248 (1832) — 45.00 90.00 150 — —  
**KM# A70 2 PARA**  
Copper **Obv:** Star and crescent within Star of David **Rev:** Mint name and date "1249" in dotted circle **Note:** 17-25mm.  
**Date** **Mintage** **Good** **VG** **F** **VF** **XF**  
AH1249//2 (1833) — 55.00 100 180 — —



**KM# 79 2 PARA**  
Copper **Obv:** Toughra within inner circle **Rev:** Mint name, date within inner circle **Note:** 20-22mm.  
**Date** **Mintage** **Good** **VG** **F** **VF** **XF**  
AH1223//28 (1834) — 20.00 37.50 70.00 — —  
**KM# 58 5 PARA**  
Billon **Obv:** Flower to right of toughra **Rev:** Mint name, date  
**Note:** Weight varies: 2.75-2.95 g.  
**Date** **Mintage** **Good** **VG** **F** **VF** **XF**  
AH1240 (1824) — 17.50 35.00 60.00 115 — —



**KM# 51 10 PARA**  
2.1000 g., Billon **Obv:** Flower to right of toughra **Rev:** Mint name and date within beaded inner circle  
**Date** **Mintage** **Good** **VG** **F** **VF** **XF**  
AH1223//13 (1819) — 65.00 125 200 — —  
AH1223//15 (1821) — 65.00 125 200 — —



**KM# 55 10 PARA**  
Billon **Obv:** Toughra, mint name and date **Rev:** Legend: 4-line inscription **Note:** 1.60-1.80 g.  
**Date** **Mintage** **Good** **VG** **F** **VF** **XF**  
AH1223//15 (1821) — 65.00 125 200 — —  
AH1223//17 (1823) — 65.00 125 200 — —

**KM# 60 10 PARA**  
Billon **Obv:** Ornamental border around toughra, mint name within inner circle **Rev:** Ornamental border around 4-line inscription within inner circle **Note:** 1.60-1.80 g.  
**Date** **Mintage** **Good** **VG** **F** **VF** **XF**  
AH1223//17 (1823) — 50.00 100 175 — —

**KM# 61 10 PARA**  
1.4000 g., Billon **Obv:** Floral border around toughra within inner circle **Rev:** Floral border around mint name, date within inner circle  
**Date** **Mintage** **Good** **VG** **F** **VF** **XF**  
AH1223//17 (1823) — 50.00 100 175 — —



**KM# 52 20 PARA**  
Billon **Obv:** Flower to right of toughra **Note:** 3.50-4.20 g.  
**Date** **Mintage** **Good** **VG** **F** **VF** **XF**  
AH1223//13 (1819) — 62.50 135 225 — —

**KM# 56 20 PARA**  
3.2000 g., Billon **Obv:** Toughra, mint name and date  
**Rev:** Legend: 4-line inscription  
**Date** **Mintage** **Good** **VG** **F** **VF** **XF**  
AH1223//15 (1821) — 65.00 125 200 — —  
AH1223//17 (1823) — 65.00 125 200 — —

**KM# 68 20 PARA**  
2.0000 g., Billon **Obv:** Toughra, mint name and date  
**Rev:** 4-line inscription  
**Date** **Mintage** **Good** **VG** **F** **VF** **XF**  
AH1223//17 (1823) — 37.50 75.00 125 — —  
AH1223//22 (1828) — 37.50 75.00 125 — —



**KM# 62 20 PARA**  
Billon **Obv:** Flower to right of toughra, ornamental design in margin **Rev:** Ornamental design in margin **Note:** 2.933-3.00 g.  
**Date** **Mintage** **Good** **VG** **F** **VF** **XF**  
AH1223//17 (1823) — 70.00 135 225 — —  
AH1223//21 (1827) — — — — — —  
Rare

**KM# 64 20 PARA**  
Billon **Obv:** Legend in margin **Rev:** Legend in margin  
**Note:** Reduced weight; 22mm, 1.20-1.60 g.  
**Date** **Mintage** **Good** **VG** **F** **VF** **XF**  
AH1223//21 (1827) — 50.00 100 175 — —

**KM# 65 20 PARA**  
Billon, 22 mm. **Obv:** Legend around toughra in inner circle  
**Rev:** Legend around reign year, mint name and date in inner circle **Note:** 1.80-2.00 grams.  
**Date** **Mintage** **Good** **VG** **F** **VF** **XF**  
AH1223//21 (1827) — 65.00 125 200 — —

**KM# 75 20 PARA**  
Billon **Note:** 22-24mm; similar to 5 Para, KM#59.  
**Date** **Mintage** **Good** **VG** **F** **VF** **XF**  
AH1223//26 (1832) — 30.00 60.00 100 — —  
AH1223//28 (1834) — 30.00 60.00 100 — —  
AH1223//29 (1835) — 30.00 60.00 100 — —



**KM# 57 30 PARA (Zolata)**  
4.5000 g., Billon **Obv:** 4-line inscription **Rev:** 4-line inscription  
**Date** **Mintage** **Good** **VG** **F** **VF** **XF**  
AH1223//15 (1821) — 75.00 150 250 400 — —

**KM# A54 50 PARA**  
4.6200 g., Billon, 30.2 mm. **Obv:** Ornamental design to right of toughra **Rev:** Inscription with reign year, mint name and date  
**Date** **Mintage** **Good** **VG** **F** **VF** **XF**  
AH1223//13 — 80.00 200 400 650 1,000



**KM# 76 100 PARA**  
Billon **Obv:** Flower to right of toughra within ornamented inner circle **Rev:** Regnal year, mint name and date in ornamented inner circle **Note:** 3.00-3.20 g.  
**Date** **Mintage** **Good** **VG** **F** **VF** **XF**  
AH1223//26 (1832) — 60.00 120 200 350 — —





**KM# 77 100 PARA**  
 Billon **Obv:** Flower to right of touhgra **Rev:** 4-line inscription  
**Note:** Weight varies: 3.00-3.20 g.

Date	Mintage	Good	VG	F	VF	XF
AH1223/26 (1832)	—	75.00	150	250	400	—
AH1223/27 (1833)	—	75.00	150	250	400	—



**KM# 53 PIASTRE (40 Para)**  
 Billon **Obv:** Ornament to right of touhgra **Rev:** Reign year, mint name and date  
**Note:** Weight varies: 3.20-4.00 g.

Date	Mintage	Good	VG	F	VF	XF
AH1223/13 (1819)	—	75.00	135	250	400	—



**KM# 66 PIASTRE (40 Para)**  
 Billon **Obv:** Flower to right of touhgra **Rev:** 4-line inscription  
**Note:** Weight varies: 3.20-4.00 g.

Date	Mintage	Good	VG	F	VF	XF
AH1223/21 (1827)	—	55.00	110	180	300	—



**KM# 67 PIASTRE (40 Para)**  
 3.6900 g., Billon **Obv:** Flower to right of touhgra **Note:** Extra legend added around central device.

Date	Mintage	Good	VG	F	VF	XF
AH1223/21 (1827)	—	75.00	150	250	400	—



**KM# B78 5 PIASTRES**  
 Silver, 36.6 mm. **Obv:** "el-ghazi" to right of touhgra within inner circle **Rev:** Mint name and date in inner rope circle

Date	Mintage	Good	VG	F	VF	XF
AH1123/25	—	—	—	—	—	—

**KM# 78 5 PIASTRES**  
 8.6500 g., Billon, 36.6 mm. **Obv:** Touhgra, "Ghazi" to right, wavy border **Rev:** Mint, date and reign year in 4 lines  
**Edge:** Diagonally reeded

Date	Mintage	Good	VG	F	VF	XF
AH1223/25	—	—	—	—	—	—

**KM# A78 5 PIASTRES**  
 Billon **Obv:** Flower to the right of touhgra within roped inner circle **Rev:** Reign year, mint name and date within roped inner circle **Note:** Weight varies: 5.50-6.90 grams. Prev. KM#78.

Date	Mintage	Good	VG	F	VF	XF
AH1223/21 (1832)	—	37.50	75.00	125	200	—
AH1223/26 (1832)	—	27.50	55.00	90.00	150	—
AH1223/27 (1833)	—	27.50	55.00	90.00	150	—

### Governor Sait Pasa AH1231 / 1815AD HAMMERED COINAGE

**KM# 82 2 PARA**  
 Copper **Obv:** Lion walking left **Rev:** Dariba fi Baghdad, date  
**Note:** Size varies: 15-18mm.

Date	Mintage	Good	VG	F	VF	XF
AH1231 (1814)	—	45.00	90.00	150	240	—



**KM# 85 5 PARA**  
 Copper **Obv:** Inscription within octogram **Obv. Inscription:** "Sait Pasa" **Rev:** Mint name and date

Date	Mintage	Good	VG	F	VF	XF
AH1231 (1815)	—	42.00	70.00	120	210	—

**Note:** This is the only Ottoman coin ever struck with a governor's name. Sait Pasa was beheaded for this infringement of tradition

**KM# 88 5 PARA**  
 Copper **Obv:** Inscription within octogram **Obv. Inscription:** "Tamgha" **Rev:** Mint name and date

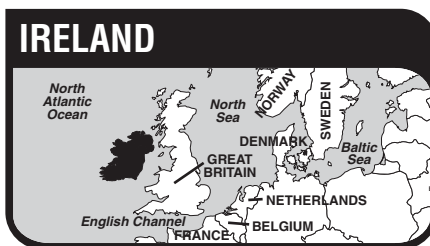
Date	Mintage	Good	VG	F	VF	XF
AH1231 (1815)	—	30.00	60.00	100	180	—

**Note:** The Tamgha was originally a sheep and cattle brand, later seal or brand. Each Turkish clan formerly kept its own Tamgha, to use both as a brand and as a seal documents

### Abdul Mejid 1839-1861AD HAMMERED COINAGE

**KM# 91 5 PARA**  
 Billon **Obv:** Flower to right of touhgra in inner circle **Rev:** Mint name and date in inner circle **Note:** 19-21mm.

Date	Mintage	Good	VG	F	VF	XF
AH1255 //1 (1839)	—	75.00	150	250	375	—



Ireland, the island located in the Atlantic Ocean west of Great Britain, was settled by a race of tall, red-haired Celts from Gaul about 400 BC. They assimilated the native Erainn and Picts and established a Gaelic civilization. After the arrival of St. Patrick in 432 AD, Ireland evolved into a center of Latin learning, which sent missionaries to Europe and possibly North America. In 1154, Pope Adrian IV gave all of Ireland to English King Henry II to administer as a Papal fief. Because of the enactment of anti-Catholic laws and the awarding of vast tracts of Irish land to Protestant absentee landowners, English control did not become reasonably absolute until 1800 when England and Ireland became the "United Kingdom of Great Britain and Ireland". Religious freedom was restored to the Irish in 1829, but agitation for political autonomy continued until the Irish Free State was established as a Dominion on Dec. 6, 1921 while Northern Ireland remained under the British rule.

**RULER**  
 British to 1921

**MONETARY SYSTEM**  
 4 Farthings = 1 Penny  
 12 Pence = 1 Shilling  
 5 Shillings = 1 Crown  
 20 Shillings = 1 Pound

### UNITED KINGDOM STANDARD COINAGE



**KM# 146.1 FARTHING**  
 Copper **Obv:** Laureate bust right **Rev. Legend:** GEORGIUS III. D.G. REX. **Rev:** Crowned harp **Rev. Legend:** HIBERNIA  
**Edge:** Engrailed

Date	Mintage	F	VF	XF	Unc	BU
1806	—	5.00	10.00	35.00	120	170
1806 Proof	—	Value: 225				

**KM# 146.1a FARTHING**  
 Copper Gilt **Obv:** Laureate bust right **Rev:** Crowned harp  
**Edge:** Engrailed

Date	Mintage	F	VF	XF	Unc	BU
1806 Proof	—	Value: 350				

**KM# 146.1b FARTHING**  
 Copper Plated Bronze **Obv:** Laureate bust right **Rev:** Crowned harp **Edge:** Engrailed

Date	Mintage	F	VF	XF	Unc	BU
1806 Proof	—	Value: 225				



**KM# 146.2 FARTHING**  
 Copper **Obv:** Laureate bust right **Rev:** Crowned harp **Edge:** Plain

Date	Mintage	F	VF	XF	Unc	BU
1806 Proof, restrrike	—	Value: 225				

**KM# 146.2a FARTHING**  
 Copper Gilt **Obv:** Laureate bust right **Rev:** Crowned harp  
**Edge:** Plain **Note:** Previously KM#146a

Date	Mintage	F	VF	XF	Unc	BU
1806 Proof, restrrike	—	Value: 300				

**KM# 146.2b FARTHING**  
 Copper Plated Bronze **Obv:** Laureate bust right **Rev:** Crowned harp  
**Edge:** Plain **Note:** Previously KM#146b

Date	Mintage	F	VF	XF	Unc	BU
1806 Proof, restrrike	—	Value: 225				

**KM# 146.2c FARTHING**  
 Silver **Obv:** Laureate bust right **Rev. Designer:** Crowned harp  
**Edge:** Plain **Note:** Previously KM#146c

Date	Mintage	F	VF	XF	Unc	BU
1806 Proof, restrrike	—	Value: 2,800				

**KM# 146.2d FARTHING**  
 Gold **Obv:** Laureate bust right **Rev:** Crowned harp **Edge:** Plain  
**Note:** Previously KM#146d

Date	Mintage	F	VF	XF	Unc	BU
1806 Proof, restrrike, rare	—					



**KM# 147.1 1/2 PENNY**  
 7.6400 g., Copper, 27.60 mm. **Obv:** Laureate bust right  
**Obv. Legend:** GEORGIUS III. D.G. REX. **Rev:** Crowned harp  
**Rev. Legend:** HIBERNIA. **Edge:** Engrailed

Date	Mintage	F	VF	XF	Unc	BU
1805	—	5.00	15.00	75.00	200	—
1805 Proof	—	Value: 300				

**KM# 147.1a 1/2 PENNY**  
 Copper Gilt **Obv:** Laureate bust right **Rev:** Crowned harp  
**Edge:** Engrailed

Date	Mintage	F	VF	XF	Unc	BU
1805 Proof	—	Value: 500				

**KM# 147.1b 1/2 PENNY**  
 Copper Plated Bronze **Obv:** Laureate bust right **Rev:** Crowned harp  
**Edge:** Engrailed

Date	Mintage	F	VF	XF	Unc	BU
1805 Proof	—	Value: 300				

**KM# 147.2 1/2 PENNY**  
 Copper **Obv:** Laureate bust right **Rev:** Crowned harp **Edge:** Plain

Date	Mintage	F	VF	XF	Unc	BU
1805 Proof, restrrike	—	Value: 275				

2011 Standard Catalog of<sup>®</sup>  
**WORLD COINS**  
**1901-2000**

**38th Edition**

---

**Thomas Michael**  
Market Analyst

**George Cuhaj**  
Editor

**Harry Miller**  
U.S. Market Analyst

**Merna Dudley**  
Coordinating Editor

**Deborah McCue**  
Database Specialist

**Kay Sanders**  
Editorial Assistant

---

—♦—  
***Special Contributor***

**JOSEPH ZAFFERN**

—♦—  
***Special Tribute***

*For years of service to Numismatics  
and the Standard Catalog of World Coins<sup>®</sup>*

**DANA ROBERTS**

**J.J. VAN GROVER**

—♦—

**Bullion Value (VB) Market Valuations**

Valuations for all platinum, gold, palladium and silver coins of the more common, basically bullion types, or those possessing only modest numismatic premiums are presented in this edition based on the market ranges of:

**\$1,450 - \$1,650** per ounce for **platinum**

**\$1100 - \$1250** per ounce for **gold**

**\$375 - \$475** per ounce for **palladium**

**\$17.50 - \$20.00** per ounce for **silver**



The Republic of Iraq, historically known as Mesopotamia, is located in the Near East and is bordered by Kuwait, Iran, Turkey, Syria, Jordan and Saudi Arabia. It has area of 167,925 sq. mi. (434,920 sq. km.) and a population of 14 million. Capital: Baghdad. The economy of Iraq is based on agriculture and petroleum. Crude oil accounted for 94 percent of the exports before the war with Iran began in 1980.

Mesopotamia was the site of a number of flourishing civilizations of antiquity - Sumeria, Assyria, Babylonia, Parthia, Persia and the Biblical cities of Ur, Nineveh and Babylon. Desired because of its favored location, which embraced the fertile alluvial plains of the Tigris and Euphrates Rivers, Mesopotamia - 'land between the rivers' - was conquered by Cyrus the Great of Persia, Alexander of Macedonia and by Arabs who made the legendary city of Baghdad the capital of the ruling caliphate. Suleiman the Magnificent conquered Mesopotamia for Turkey in 1534, and it formed part of the Ottoman Empire until 1623, and from 1638 to 1917. Great Britain, given a League of Nations mandate over the territory in 1920, recognized Iraq as a kingdom in 1922. Iraq became an independent constitutional monarchy presided over by the Hashemite family, direct descendants of the prophet Mohammed, in 1932. In 1958, the army-led revolution of July 14 overthrew the monarchy and proclaimed a republic.

**NOTE:** The 'I' mintmark on 1938 and 1943 issues appears on the obverse near the point of the bust. Some of the issues of 1938 have a dot to denote a composition change from nickel to copper-nickel.

**RULERS**

- Ottoman, until 1917
- British, 1921-1922
- Faisal I, 1921-1933
- Ghazi I, 1933-1939
- Faisal II, Regency, 1939-1953
- As King, 1953-1958

**MINT MARK**

I - Bombay

**MONETARY SYSTEM**

فلساً فلساً فلساً  
Falus, Fulus Fals, Fils Falsan

- 50 Fils = 1 Dirham
- 200 Fils = 1 Riyal
- 1000 Fils = 1 Dinar (Pound)

**TITLES**

العراق

Al-Iraq

المملكة العراقية

SAI-Mamlaka(t) al-Iraqiya(t)

الجمهورية العراقية

Al-Jumhuriya(t) al-Iraqiya(t)

**KINGDOM OF IRAQ**

Faisal I  
1921-1933AD

**DECIMAL COINAGE**



**KM# 95 FLS**

2.5000 g., Bronze, 19.5 mm. Obv: Head right Rev: Value in center circle flanked by dates

Date	Mintage	F	VF	XF	Unc	BU
1931	4,000,000	1.00	3.00	10.00	25.00	—
1931 Proof	—	—	—	—	—	—
1933	6,000,000	1.00	3.00	10.00	25.00	—
1933 Proof	—	—	—	—	—	—



**KM# 96 2 FLS**

5.0000 g., Bronze, 24 mm. Obv: Head right Rev: Value in center circle flanked by dates

Date	Mintage	F	VF	XF	Unc	BU
1931	2,500,000	1.25	3.50	10.00	25.00	—
1931 Proof	—	—	—	—	—	—
1933	1,000,000	1.50	4.00	15.00	35.00	—
1933 Proof	—	—	—	—	—	—



**KM# 97 4 FLS**

4.0000 g., Nickel, 21 mm. Obv: Head right Rev: Value in center circle flanked by dates

Date	Mintage	F	VF	XF	Unc	BU
1931	4,500,000	1.50	4.00	15.00	50.00	—
1931 Proof	—	—	—	—	—	—
1933	6,500,000	1.50	4.00	15.00	50.00	—
1933 Proof	—	—	—	—	—	—



**KM# 98 10 FLS**

6.7500 g., Nickel, 25 mm. Obv: Head right Rev: Value within center circle flanked by dates

Date	Mintage	F	VF	XF	Unc	BU
1931	2,400,000	2.00	5.00	16.50	50.00	—
1931 Proof	—	—	—	—	—	—
1933	2,200,000	2.00	5.00	16.50	50.00	—
1933 Proof	—	—	—	—	—	—



**KM# 99 20 FLS**

3.6000 g., 0.5000 Silver 0.0579 oz. ASW, 20.5 mm. Obv: Head right Rev: Value in center circle flanked by dates

Date	Mintage	F	VF	XF	Unc	BU
1931	1,500,000	2.50	9.00	25.00	75.00	—
1931 Proof	—	—	—	—	—	—
1933	1,100,000	2.50	9.00	25.00	75.00	—
1933 Proof	—	—	—	—	—	—
1933 (error) 1252 Inc. above	20.00	60.00	100	200	—	—



**KM# 100 50 FLS**

9.0000 g., 0.5000 Silver 0.1447 oz. ASW, 26.5 mm. Obv: Head right Rev: Value in center circle flanked by dates

Date	Mintage	F	VF	XF	Unc	BU
1931	8,800,000	3.50	10.00	28.00	80.00	—
1931 Proof	—	—	—	—	—	—
1933	800,000	6.00	15.00	35.00	100	—
1933 Proof	—	—	—	—	—	—



**KM# 101 RIYAL (200 Fils)**

20.0000 g., 0.5000 Silver 0.3215 oz. ASW, 34 mm. Obv: Head right Rev: Value in center circle flanked by dates Note: Dav. #255.

Date	Mintage	F	VF	XF	Unc	BU
1932	500,000	7.50	15.00	35.00	350	—
1932 Proof	—	—	—	—	—	—
	Est. 20	Value:	1,600			

**Ghazi I  
1933-1939AD**

**DECIMAL COINAGE**



**KM# 102 FLS**

2.5000 g., Bronze, 19.5 mm. Obv: Head left Rev: Value in center circle flanked by dates Note: Struck at Royal and Bombay Mint.

Date	Mintage	F	VF	XF	Unc	BU
1936	3,000,000	1.25	4.00	10.00	25.00	—
1936 Proof	—	—	—	—	—	—
1938	36,000,000	0.25	0.50	1.00	3.00	—
1938 Proof	—	—	—	—	—	—
1938 -I	3,000,000	0.50	2.00	5.00	15.00	—

**KM# 105 4 FLS**

4.0000 g., Nickel, 21 mm. Obv: Head left Rev: Value within center circle flanked by dates

Date	Mintage	F	VF	XF	Unc	BU
1938	1,000,000	1.00	2.00	6.00	15.00	—
1938 Proof	—	—	—	—	—	—
1939	1,000,000	1.25	2.50	10.00	30.00	—
1939 Proof	—	—	—	—	—	—

**KM# 105a 4 FLS**

21.0000 g., Copper-Nickel, 21 mm. Obv: Head left Rev: Value within center circle flanked by dates Note: Struck at Royal and Bombay Mint.

Date	Mintage	F	VF	XF	Unc	BU
1938	2,750,000	0.75	1.00	2.00	6.00	—
1938 Proof	—	—	—	—	—	—
1938 -I	2,500,000	1.00	2.00	7.50	15.00	—



**KM# 105b 4 FLS**

4.0000 g., Bronze, 21 mm. Obv: Head left Rev: Value in center circle flanked by dates

Date	Mintage	F	VF	XF	Unc	BU
1938	8,000,000	0.50	1.00	2.00	6.00	—
1938 Proof	—	—	—	—	—	—



**KM# 103 10 FLS**

6.7500 g., Nickel, 25 mm. Obv: Head left Rev: Value in center circle flanked by dates

Date	Mintage	F	VF	XF	Unc	BU
1937	400,000	3.00	5.00	16.50	50.00	—
1937 Proof	—	—	—	—	—	—
1938	600,000	2.50	4.00	10.00	35.00	—
1938 Proof	—	—	—	—	—	—

**KM# 103a 10 FILS**

6.7500 g., Copper-Nickel, 25 mm. **Obv:** Head left **Rev:** Value within center circle flanked by dates **Note:** Struck at Royal and Bombay Mint.

Date	Mintage	F	VF	XF	Unc	BU
1938	1,100,000	1.00	2.00	4.00	10.00	—
1938 Proof	—	—	—	—	—	—
1938 -I	1,500,000	1.50	2.50	6.00	15.00	—

**KM# 103b 10 FILS**

6.7500 g., Bronze, 25 mm. **Obv:** Head left **Rev:** Value within center circle flanked by dates

Date	Mintage	F	VF	XF	Unc	BU
1938	8,250,000	0.50	1.00	2.50	6.50	—
1938 Proof	—	—	—	—	—	—



**KM# 106 20 FILS**

3.6000 g., 0.5000 Silver 0.0579 oz. ASW, 20.5 mm. **Obv:** Head left **Rev:** Value in center circle flanked by dates

Date	Mintage	F	VF	XF	Unc	BU
1938	1,200,000	2.00	3.50	8.00	22.00	—
1938 -I	1,350,000	2.00	4.00	9.00	26.00	—



**KM# 104 50 FILS**

9.0000 g., 0.5000 Silver 0.1447 oz. ASW, 26.5 mm. **Obv:** Head left **Rev:** Value in center circle flanked by dates **Note:** Struck at Royal and Bombay Mint.

Date	Mintage	F	VF	XF	Unc	BU
1937	1,200,000	3.50	7.00	10.00	30.00	—
1937 Proof	—	—	—	—	—	—
1938	5,300,000	3.00	5.00	8.00	25.00	—
1938 Proof	—	—	—	—	—	—
1938 -I	7,500,000	3.00	5.00	8.00	25.00	—

**Faisal II - Regency  
1939-1953AD**

**DECIMAL COINAGE**



**KM# 107 4 FILS**

4.0000 g., Bronze, 21 mm. **Obv:** Head right **Rev:** Value in center circle flanked by dates

Date	Mintage	F	VF	XF	Unc	BU
1943 -I	1,500,000	2.00	3.00	7.00	15.00	—



**KM# 108 10 FILS**

6.7500 g., Bronze, 25 mm. **Obv:** Head right **Rev:** Value in center circle flanked by dates

Date	Mintage	F	VF	XF	Unc	BU
1943 -I	1,500,000	3.00	7.00	20.00	50.00	—

**Faisal II - King  
1953-1958AD**

**DECIMAL COINAGE**



**KM# 109 FILS**

Bronze **Obv:** Head right **Rev:** Value in center circle flanked by dates

Date	Mintage	F	VF	XF	Unc	BU
1953	41,000,000	0.25	0.40	0.60	1.00	—
1953 Proof	200	Value: 75.00		—	—	—



**KM# 110 2 FILS**

Bronze **Obv:** Head right **Rev:** Value in center circle flanked by dates

Date	Mintage	F	VF	XF	Unc	BU
1953	500,000	0.50	1.00	3.00	12.50	—
1953 Proof	200	Value: 100		—	—	—



**KM# 111 4 FILS**

4.0000 g., Copper-Nickel, 21 mm. **Obv:** Head right **Rev:** Value in center circle flanked by dates

Date	Mintage	F	VF	XF	Unc	BU
1953	20,750,000	0.50	0.75	1.00	2.50	—
1953 Proof	200	Value: 75.00		—	—	—



**KM# 112 10 FILS**

6.7500 g., Copper-Nickel, 25 mm. **Obv:** Head right **Rev:** Value in center circle flanked by dates

Date	Mintage	F	VF	XF	Unc	BU
1953	11,400,000	0.50	0.75	1.00	2.50	—
1953 Proof	200	Value: 75.00		—	—	—



**KM# 113 20 FILS**

3.6000 g., 0.5000 Silver 0.0579 oz. ASW, 20.5 mm. **Obv:** Head right **Rev:** Value in center circle flanked by dates

Date	Mintage	F	VF	XF	Unc	BU
1953	250,000	25.00	45.00	70.00	140	—
1953 Proof	200	Value: 300		—	—	—



**KM# 116 20 FILS**

2.8000 g., 0.5000 Silver 0.0450 oz. ASW, 19 mm. **Obv:** Head right **Rev:** Value in center circle, date above sprigs, legend above

Date	Mintage	F	VF	XF	Unc	BU
1955	4,000,000	1.50	3.00	5.00	10.00	—
1955 Proof	—	Value: 80.00		—	—	—



**KM# 114 50 FILS**

9.0000 g., 0.5000 Silver 0.1447 oz. ASW, 26.5 mm. **Obv:** Head right **Rev:** Value in center circle flanked by dates

Date	Mintage	F	VF	XF	Unc	BU
1953	560,000	50.00	100	150	250	—
1953 Proof	200	Value: 450		—	—	—



**KM# 117 50 FILS**

7.0000 g., 0.5000 Silver 0.1125 oz. ASW, 26 mm. **Obv:** Head right **Rev:** Value in center circle, date above sprigs, legend above

Date	Mintage	F	VF	XF	Unc	BU
1955	12,000,000	2.50	4.00	6.00	11.50	—
1955 Proof	—	Value: 80.00		—	—	—



**KM# 115 100 FILS**

10.0000 g., 0.9000 Silver 0.2893 oz. ASW, 29 mm. **Obv:** Head right **Rev:** Value in center circle flanked by dates

Date	Mintage	F	VF	XF	Unc	BU
1953	1,200,000	6.00	8.00	20.00	50.00	—
1953 Proof	200	Value: 250		—	—	—



**KM# 118 100 FILS**

10.0000 g., 0.5000 Silver 0.1607 oz. ASW, 29 mm. **Obv:** Head right **Rev:** Value in center circle flanked by dates

Date	Mintage	F	VF	XF	Unc	BU
1955	1,000,000	—	700	1,000	1,500	—
1955 Proof	—	Value: 300		—	—	—

**REPUBLIC  
DECIMAL COINAGE**



**KM# 119 FILS**

2.5000 g., Bronze, 19 mm. **Obv:** Value in center circle, dates above sprig, legend above **Rev:** Oat sprig within center circle of star design

Date	Mintage	F	VF	XF	Unc	BU
1959	72,000,000	0.15	0.25	0.50	1.00	—
1959 Proof	400	Value: 30.00		—	—	—



**KM# 120 5 FILS**

5.0000 g., Copper-Nickel, 22 mm. **Obv:** Value in center circle above dates and sprigs, legend above **Rev:** Oat sprig within center circle of star design

Date	Mintage	F	VF	XF	Unc	BU
1959	30,000,000	0.15	0.25	0.50	1.00	—
1959 Proof	400	Value: 30.00				—



**KM# 125 5 FILS**

5.0000 g., Copper-Nickel, 22 mm. **Obv:** Value in center circle above oat sprigs, legend above **Rev:** Palm trees divide dates

Date	Mintage	F	VF	XF	Unc	BU
1967	17,000,000	0.15	0.25	0.35	0.50	—
1971	15,000,000	0.15	0.25	0.35	0.50	—

**KM# 125a 5 FILS**

5.0400 g., Stainless Steel, 22 mm. **Obv:** Value in center circle above oat sprigs, legend above **Rev:** Palm trees divide dates

Date	Mintage	F	VF	XF	Unc	BU
1971	2,000,000	0.20	0.30	0.50	0.75	—
1974	15,000,000	0.10	0.15	0.25	0.35	—
1975	94,800,000	0.10	0.15	0.25	0.35	—
1980	20,160,000	0.10	0.15	0.25	0.35	—
1981	29,840,000	0.10	0.15	0.25	0.35	—

**Note:** Non-magnetic



**KM# 141 5 FILS**

Stainless Steel **Series:** F.A.O. **Obv:** Value in center circle divides legend **Rev:** Palm trees divide date

Date	Mintage	F	VF	XF	Unc	BU
1975	2,000,000	0.10	0.15	0.25	0.50	—

**KM# 159 5 FILS**

Stainless Steel **Subject:** Babylon-Ruins **Obv:** Value in center circle divides legend **Rev:** Dates above ruins

Date	Mintage	F	VF	XF	Unc	BU
1982	—	0.10	0.15	0.25	0.50	—

**KM# 159a 5 FILS**

Copper-Nickel **Subject:** Babylon-Ruins **Obv:** Value in center circle divides legend **Rev:** Dates above ruins

Date	Mintage	F	VF	XF	Unc	BU
1982 Proof	—	Value: 3.00				—



**KM# 121 10 FILS**

6.7500 g., Copper-Nickel, 26 mm. **Obv:** Value in center circle above dates and sprigs, legend above **Rev:** Oat sprig within center circle of star-like design

Date	Mintage	F	VF	XF	Unc	BU
1959	24,000,000	0.25	0.35	0.65	1.50	—
1959 Proof	400	Value: 30.00				—



**KM# 126 10 FILS**

6.8100 g., Copper-Nickel, 26 mm. **Obv:** Value in center circle above oat sprigs, legend above **Rev:** Palm trees divide dates

Date	Mintage	F	VF	XF	Unc	BU
1967	13,400,000	0.20	0.30	0.60	1.25	—
1971	12,000,000	0.20	0.30	0.60	1.25	—

**KM# 126a 10 FILS**

5.8000 g., Stainless Steel, 26 mm. **Obv:** Value in center circle above sprigs, legend above **Rev:** Palm trees divide dates

Date	Mintage	F	VF	XF	Unc	BU
1971	1,550,000	0.25	0.35	0.65	1.50	—
1974	12,000,000	0.20	0.30	0.50	1.00	—
1975	52,456,000	0.20	0.30	0.50	1.00	—
1979	13,800,000	0.20	0.30	0.50	1.00	—
1980	11,264,000	0.20	0.30	0.50	1.00	—
1981	63,736,000	0.20	0.30	0.50	1.00	—

**Note:** Non-magnetic



**KM# 142 10 FILS**

5.8000 g., Stainless Steel, 26 mm. **Series:** F.A.O. **Obv:** Value within circle divides legend **Rev:** Palm trees divide dates

Date	Mintage	F	VF	XF	Unc	BU
1975	1,000,000	0.15	0.25	0.50	0.75	—

**KM# 160 10 FILS**

Stainless Steel, 26 mm. **Obv:** Value within circle divides legends **Rev:** Dates above ruins **Leg.:** Babylon - Ishtar Gate

Date	Mintage	F	VF	XF	Unc	BU
1982	—	—	—	—	0.75	—

**KM# 160a 10 FILS**

Copper-Nickel **Obv:** Value within circle divides legends **Rev:** Dates above ruins **Leg.:** Babylon - Ishtar Gate

Date	Mintage	F	VF	XF	Unc	BU
1982 Proof	—	Value: 3.00				—



**KM# 122 25 FILS**

2.8000 g., 0.5000 Silver 0.0450 oz. ASW, 20 mm. **Obv:** Value within circle above dates and sprigs, legend above **Rev:** Oat sprig within center circle of star-like design

Date	Mintage	F	VF	XF	Unc	BU
1959	12,000,000	1.00	1.50	2.00	3.50	—
1959 Proof	400	Value: 40.00				—



**KM# 127 25 FILS**

2.8000 g., Copper-Nickel, 20 mm. **Obv:** Value in center circle above sprigs, legend above **Rev:** Palm trees divide dates

Date	Mintage	F	VF	XF	Unc	BU
1969	6,000,000	0.20	0.30	0.50	1.00	—
1970	6,000,000	0.20	0.30	0.50	1.00	—
1972	12,000,000	0.20	0.30	0.50	1.00	—
1975	48,000,000	0.20	0.30	0.50	1.00	—
1981	60,000,000	0.20	0.30	0.50	1.00	—



**KM# 161 25 FILS**

2.8000 g., Copper-Nickel, 20 mm. **Obv:** Value in center circle divides legend **Rev:** Dates above lion

Date	Mintage	F	VF	XF	Unc	BU
1982	—	—	—	—	1.25	—
1982 Proof	—	Value: 4.00				—



**KM# 123 50 FILS**

5.0000 g., 0.5000 Silver 0.0804 oz. ASW, 23 mm. **Obv:** Value

in center circle above dates and sprigs, legend above **Rev:** Oat sprig within center circle of star-like design

Date	Mintage	F	VF	XF	Unc	BU
1959	24,000,000	1.75	2.00	3.00	5.00	—
1959 Proof	400	Value: 80.00				—



**KM# 128 50 FILS**

5.5400 g., Copper-Nickel, 23 mm. **Obv:** Value within circle above sprigs, legend above **Rev:** Palm trees divide dates

Date	Mintage	F	VF	XF	Unc	BU
1969	12,000,000	0.25	0.35	0.65	1.25	—
1970	12,000,000	0.25	0.35	0.65	1.25	—
1972	12,000,000	0.25	0.35	0.65	1.25	—
1975	36,000,000	0.25	0.35	0.65	1.25	—
1979	1,500,000	0.25	0.35	0.65	1.75	—
1980	23,520,000	0.25	0.35	0.65	1.25	—
1981	138,995,000	0.25	0.35	0.65	1.00	—
1990	—	0.25	0.35	0.65	1.00	—



**KM# 162 50 FILS**

Copper-Nickel, 23 mm. **Obv:** Value in center circle divides legend **Rev:** Horse right

Date	Mintage	F	VF	XF	Unc	BU
1982	—	0.25	0.50	0.75	2.50	—
1982 Proof	—	Value: 6.00				—



**KM# 124 100 FILS**

10.0000 g., 0.5000 Silver 0.1607 oz. ASW, 29 mm. **Obv:** Value within circle above dates and sprigs, legend above **Rev:** Oat sprig within center circle of star-like design

Date	Mintage	F	VF	XF	Unc	BU
1959	6,000,000	3.50	4.50	6.50	10.00	—
1959 Proof	400	Value: 150				—



**KM# 129 100 FILS**

10.9500 g., Copper-Nickel, 29.2 mm. **Obv:** Value within circle above sprigs, legend above **Rev:** Palm trees divide dates

Date	Mintage	F	VF	XF	Unc	BU
1970	6,000,000	0.35	0.50	0.75	1.50	—
1972	6,000,000	0.35	0.50	0.75	1.50	—
1975	12,000,000	0.35	0.50	0.75	1.50	—
1979	1,000,000	0.35	0.75	1.50	3.00	—



**KM# 130 250 FILS**

Nickel **Series:** F.A.O. **Subject:** Agrarian Reform Day **Obv:** Value within circle above sprigs, legend above **Rev:** Palm trees divide dates

Date	Mintage	F	VF	XF	Unc	BU
1970	500,000	—	1.50	3.00	6.00	—
1970 Proof	1,000	Value: 14.50				

Note: Varieties exist with edge inscription w/FAO-250-repeated three times in relief



**KM# 131 250 FILS**  
15.1500 g., Nickel, 33 mm. **Subject:** 1st Anniversary Peace with Kurds **Obv:** Value within circle above dates and sprigs, legend above **Rev:** Value, design and dove within circle, outer circle consists of 1/2 gear and 1/2 sprigs

Date	Mintage	F	VF	XF	Unc	BU
1971	500,000	—	1.50	3.00	6.00	—
1971 Proof	1,000	Value: 14.50				



**KM# 135 250 FILS**  
14.9000 g., Nickel, 33 mm. **Subject:** Silver Jubilee of Al Baath Party **Obv:** Value within circle above dates, legend above and below **Rev:** Palm trees divide dates

Date	Mintage	F	VF	XF	Unc	BU
1972	250,000	—	1.50	3.00	6.00	—



**KM# 136 250 FILS**  
14.9000 g., Nickel, 33 mm. **Subject:** 25th Anniversary of Central Bank **Obv:** Value within circle above dates, legend above and below **Rev:** Palm trees divide dates

Date	Mintage	F	VF	XF	Unc	BU
1972	250,000	—	1.50	3.00	6.00	—



**KM# 138 250 FILS**  
Nickel **Subject:** Oil Nationalization **Obv:** Value within circle above dates, legend above and below **Rev:** Torch divides oil rig tower and pump, flanked by dates

Date	Mintage	F	VF	XF	Unc	BU
1973	260,000	—	1.50	3.00	6.50	—
1973 Proof	5,000	Value: 12.00				



**KM# 144 250 FILS**  
Nickel **Subject:** International Year of the Child **Obv:** Value within circle divides legends and emblems **Rev:** Child's laureate head right within circle

Date	Mintage	F	VF	XF	Unc	BU
1979 Proof	10,000	Value: 8.00				



**KM# 146 250 FILS**  
Copper-Nickel **Subject:** 1st Anniversary of Hussein as President **Obv:** Value within center circle flanked by dates, legend above and below **Rev:** Bust 1/4 left

Date	Mintage	F	VF	XF	Unc	BU
1980	—	—	3.00	6.00	12.00	28.00



**KM# 147 250 FILS**  
10.4000 g., Copper-Nickel, 29.8 mm. **Obv:** Value within circle above sprigs, legend above **Rev:** Palm trees divide dates

Date	Mintage	F	VF	XF	Unc	BU
1980	—	—	1.00	2.00	5.00	—
1981	25,568,000	—	1.00	2.00	5.00	—
1990	—	—	1.00	2.00	5.00	—



**KM# 152 250 FILS**  
10.1000 g., Copper-Nickel, 30 mm. **Subject:** World Food Day **Obv:** F.A.O logo below value flanked by designs, legend above and below **Rev:** Design within circle divides dates

Date	Mintage	F	VF	XF	Unc	BU
1981	46,432,000	—	1.00	2.00	4.00	—



**KM# 155 250 FILS**  
10.2000 g., Copper-Nickel, 30 mm. **Subject:** Nonaligned Nations Baghdad Conference **Obv:** Value within circle, legend above and below **Rev:** Stylized tree divides dates above legend

Date	Mintage	F	VF	XF	Unc	BU
1982	—	—	1.00	2.00	5.00	—



**KM# 163 250 FILS**  
10.3000 g., Copper-Nickel, 30 mm. **Obv:** Value within circle, legend above and below **Rev:** Monument flanked by dates

Date	Mintage	F	VF	XF	Unc	BU
1982	—	—	1.00	2.00	4.50	—
1982 Proof	—	Value: 8.00				



**KM# 132 500 FILS**  
Nickel **Subject:** 50th Anniversary of Iraqi Army **Obv:** Value in circle flanked by designs, legend above and below **Rev:** Conjoined armored busts divide dates

Date	Mintage	F	VF	XF	Unc	BU
1971	100,000	—	2.50	4.50	10.00	12.50
1971 Proof	5,000	Value: 15.00				



**KM# 139 500 FILS**  
Nickel **Subject:** Oil Nationalization **Obv:** Value within circle, date below, legend above and below **Rev:** Oil rig divides dates

Date	Mintage	F	VF	XF	Unc	BU
1973	260,000	—	2.50	4.50	10.00	—
1973 Proof	5,000	Value: 17.50				



**KM# 165 500 FILS**  
9.0800 g., Nickel, 30.1 mm. **Obv:** Value within circle above sprigs, "500 Fals" **Rev:** Palm trees divide dates

Date	Mintage	F	VF	XF	Unc	BU
1982	—	—	2.50	4.00	7.00	—



**KM# 165a 500 FILS**  
8.9800 g., Nickel, 30.1 mm. **Obv:** Value within circle above sprigs, "500 Falsan" **Rev:** Palm trees divide dates **Note:** Reduced weight.

Date	Mintage	F	VF	XF	Unc	BU
1982	—	—	20.00	35.00	85.00	—



**KM# 168 500 FILS**  
 9.0800 g., Nickel, 30 mm. **Obv:** Value within circle divides legend, "500 Fals" **Rev:** Lion of Babylon flanked by dates  

Date	Mintage	F	VF	XF	Unc	BU
1982	—	—	2.00	3.50	8.00	—
1982 Proof	—	Value: 12.50				

**KM# 168a 500 FILS**  
 9.0800 g., Nickel **Obv:** Value within circle divides legend, "500 Falsan" **Rev:** Lion of Babylon flanked by dates  

Date	Mintage	F	VF	XF	Unc	BU
1982	—	—	15.00	25.00	75.00	—



**KM# 143 DINAR**  
 31.0000 g., 0.9000 Silver 0.8970 oz. ASW **Subject:** Inauguration of Tharthat-Euphrates Canal **Obv:** Value within circle flanked by designs, legend above and below **Rev:** Dam with inscription above and dates below  

Date	Mintage	F	VF	XF	Unc	BU
1977 Proof	7,000	Value: 40.00				

Date	Mintage	F	VF	XF	Unc	BU
1980	—	—	—	7.00	14.00	30.00
1980 Proof	—	Value: 35.00				



**KM# 153 DINAR**  
 Nickel **Subject:** 50th Anniversary of Iraq Air Force **Obv:** Value within circle with legend above and dates and legend below **Rev:** Bust left divides dates, planes above with banner, sprigs below  

Date	Mintage	F	VF	XF	Unc	BU
1981	—	—	—	9.00	18.00	35.00



**KM# 133 DINAR**  
 31.0000 g., 0.9000 Silver 0.8970 oz. ASW **Subject:** 50th Anniversary of Iraqi Army **Obv:** Value within circle flanked by designs, legend above and below **Rev:** Conjoined armored busts divide dates  

Date	Mintage	F	VF	XF	Unc	BU
1971	14,500	—	—	—	22.50	30.00
1971 Proof	5,500	Value: 40.00				



**KM# 145 DINAR**  
 31.0000 g., 0.9000 Silver 0.8970 oz. ASW **Subject:** International Year of the Child **Obv:** Value within circle flanked by designs, legend above and below **Rev:** Child's laureate head right within circle **Note:** KM#145 is commonly found impaired. Value listed is for unimpaired Proof.  

Date	Mintage	F	VF	XF	Unc	BU
1979 Proof	5,000	Value: 47.50				



**KM# 170 DINAR**  
 Nickel **Subject:** Circulation Coinage **Obv:** Value within circle above sprigs, legend above **Rev:** Palm trees divide dates  

Date	Mintage	F	VF	XF	Unc	BU
1981	—	—	—	—	6.50	—



**KM# 156 DINAR**  
 13.2000 g., Nickel, 32.8 mm. **Subject:** Nonaligned Nations Baghdad Conference **Obv:** Value within circle with legend above and below **Rev:** Stylized tree divides dates within legend  

Date	Mintage	F	VF	XF	Unc	BU
1982	—	—	—	3.50	8.00	—



**KM# 137 DINAR**  
 31.0000 g., 0.5000 Silver 0.4983 oz. ASW **Subject:** 25th Anniversary of Central Bank **Obv:** Value within circle flanked by designs, legend above and below **Rev:** Palm trees divide dates  

Date	Mintage	F	VF	XF	Unc	BU
1972	50,000	—	—	—	20.00	25.00
1972 Proof	—	Value: 35.00				



**KM# 148 DINAR**  
 30.5300 g., 0.9000 Silver 0.8834 oz. ASW **Subject:** 15th Century of Hegira **Obv:** Value and dates within circle with legend around border **Rev:** Stylized value within Mosque **Note:** KM#148 is commonly found impaired. Value listed is for unimpaired Proof.  

Date	Mintage	F	VF	XF	Unc	BU
1980 Proof	25,000	Value: 50.00				



**KM# 164 DINAR**  
 13.2000 g., Nickel, 32.7 mm. **Obv:** Value within circle divides legend **Rev:** Tower of Babylon flanked by dates  

Date	Mintage	F	VF	XF	Unc	BU
1982	—	—	—	3.50	8.00	—
1982 Proof	—	Value: 12.50				



**KM# 140 DINAR**  
 31.0000 g., 0.5000 Silver 0.4983 oz. ASW **Subject:** Oil Nationalization **Obv:** Value within circle flanked by designs, legend above and below **Rev:** Half radiant sun divides dates above long ship  

Date	Mintage	F	VF	XF	Unc	BU
1973	60,000	—	—	—	20.00	25.00
1973 Proof	5,000	Value: 37.50				



**KM# 149 DINAR**  
 Nickel **Subject:** Battle of Qadissyat **Obv:** Value within circle flanked by dates, legends and map **Rev:** Bust 1/4 left in front of battle scene



**KM# 134 5 DINARS**  
 13.5700 g., 0.9170 Gold 0.4001 oz. AGW **Subject:** 50th Anniversary of Iraqi Army **Obv:** Value within circle flanked by designs with legend above and below **Rev:** Conjoined armored busts divide dates  

Date	Mintage	F	VF	XF	Unc	BU
1971	20,000	—	—	—	BV	550
1971 Proof	—	Value: 650				



**KM# 171 5 DINARS**  
Bronze, 28 mm. **Obv:** Denomination and legend **Rev:** Two swords arched above palm tree  
**Date** **Mintage** **F** **VF** **XF** **Unc** **BU**  
1990 — — — — — 5.00 —  
**Note:** Not released to circulation

**KM# 172 10 DINARS**  
Bronze **Obv:** Denomination and legend **Rev:** Two swords arched above palm tree  
**Date** **Mintage** **F** **VF** **XF** **Unc** **BU**  
1990 — — — — — 10.00 —  
**Note:** Not released to circulation



**KM# 166 50 DINARS**  
13.7000 g., 0.9170 Gold 0.3833 oz. AGW **Subject:** International Year of the Child **Obv:** Value within circle flanked designs with legend above and below **Rev:** Child's laureate head right within circle  
**Date** **Mintage** **F** **VF** **XF** **Unc** **BU**  
1979 Proof 10,000 Value: 600  
1979 Impaired Inc. above BV+10%  
Proof



**KM# 150 50 DINARS**  
13.0000 g., 0.9170 Gold 0.3833 oz. AGW **Subject:** 15th Century of Hegira **Obv:** Value and inscription within center circle of legend **Rev:** Stylized value within Mosque  
**Date** **Mintage** **F** **VF** **XF** **Unc** **BU**  
1980 Proof 13,000 Value: 550  
1980 Impaired Inc. above BV+10%  
Proof

**KM# 173 50 DINARS**  
16.9650 g., 0.9170 Gold 0.5001 oz. AGW **Subject:** 1st Anniversary of Hussein as President  
**Date** **Mintage** **F** **VF** **XF** **Unc** **BU**  
1980 Proof — Value: 650

**KM# 157 50 DINARS**  
13.7000 g., 0.9170 Gold 0.4039 oz. AGW **Subject:** Nonaligned Nations Baghdad Conference  
**Date** **Mintage** **F** **VF** **XF** **Unc** **BU**  
1982 Proof 10,000 Value: 550



**KM# 167 100 DINARS**  
26.0000 g., 0.9170 Gold 0.7665 oz. AGW **Subject:** International Year of the Child **Obv:** Value within circle flanked by designs, legend above and below **Rev:** Child's laureate head right within circle  
**Date** **Mintage** **F** **VF** **XF** **Unc** **BU**  
1979 Proof 10,000 Value: 1,100  
1979 Impaired Inc. above BV+10%  
Proof



**KM# 151 100 DINARS**  
26.0000 g., 0.9170 Gold 0.7665 oz. AGW **Subject:** 15th Century of Hegira **Obv:** Inscription and value within center circle of legend **Rev:** Stylized value within Mosque  
**Date** **Mintage** **F** **VF** **XF** **Unc** **BU**  
1980 Proof 14,000 Value: 1,100  
1980 Impaired Inc. above BV+10%  
Proof  
**KM# 174 100 DINARS**  
33.9300 g., 0.9170 Gold 1.0003 oz. AGW **Subject:** 1st Anniversary of Hussein as President  
**Date** **Mintage** **F** **VF** **XF** **Unc** **BU**  
1980 Proof — Value: 1,500



**KM# 158 100 DINARS**  
33.9300 g., 0.9170 Gold 1.0003 oz. AGW **Subject:** Nonaligned Nations Baghdad Conference **Obv:** Value within circle with legend above and below **Rev:** Stylized tree divides dates  
**Date** **Mintage** **F** **VF** **XF** **Unc** **BU**  
1982 Proof 10,000 Value: 1,450

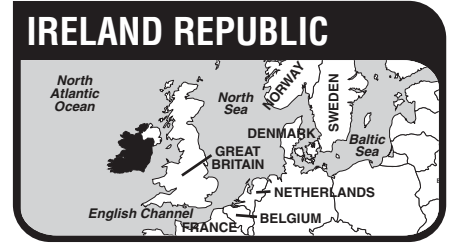
**PATTERNS**

Including off metal strikes

KM#	Date	Mintage	Identification	Mkt Val
Pn1	1935	—	20 Fils. Silver. KM106.	450
Pn2	1935	—	50 Fils. Silver. KM104.	450
Pn3	1936	—	2 Fils. Bronze. KM96.	250
Pn4	1936	—	4 Fils. Nickel. KM105.	275
Pn5	1936	—	10 Fils. Nickel. KM103.	325
Pn6	1936	—	20 Fils. Silver. KM106.	425
Pn7	1936	—	50 Fils. Silver. KM104.	450

**PROOF SETS**

KM#	Date	Mintage	Identification	Issue Price	Mkt Val
PS1	1953 (7)	200	KM109-115	—	1,325
PS2	1955 (3)	—	KM116-118	—	500
PS3	1959 (6)	400	KM119-124	—	360
PS4	1959 (7)	—	KM119-124, plus medallic crown (X1)	—	600
PS5	1973 (3)	5,000	KM138-140	—	70.00
PS6	1982 (7)	—	KM159a, 160a, 161-164, 168	—	50.00



The Republic of Ireland, which occupies five-sixths of the island of Ireland located in the Atlantic Ocean west of Great Britain, has an area of 27,136 sq. mi. (70,280 sq. km.) and a population of 4.3 million. Capital: Dublin. Agriculture and dairy farming are the principal industries. Meat, livestock, dairy products and textiles are exported.

A race of tall, red-haired Celts from Gaul arrived in Ireland about 400 B.C., assimilated the native Erainn and Picts, and established a Gaelic civilization. After the arrival of St. Patrick in 432AD, Ireland evolved into a center of Latin learning, which sent missionaries to Europe and possibly North America. In 1154, Pope Adrian IV gave all of Ireland to English King Henry II to administer as a Papal fief. Because of the enactment of anti-Catholic laws and the awarding of vast tracts of Irish land to Protestant absentee landowners, English control did not become reasonably absolute until 1800 when England and Ireland became the 'United Kingdom of Great Britain and Ireland'. Religious freedom was restored to the Irish in 1829, but agitation for political autonomy continued until the Irish Free State was established as a dominion on Dec. 6, 1921 until 1937 when it became Eire. Ireland proclaimed itself a republic on April 18, 1949. The government, however, does not use the term 'Republic of Ireland,' which tacitly acknowledges the partitioning of the island into Ireland and Northern Ireland, but refers to the country simply as 'Ireland.'

**RULER**

British, until 1921

**MONETARY SYSTEM**

(1928-1971)

- 4 Farthings = 1 Penny
- 12 Pence = 1 Shilling
- 2 Shillings = 1 Florin
- 20 Shillings = 1 Pound

**NOTE:** This section has been renumbered to segregate the coinage of the Irish Free State from the earlier crown coinage of Ireland.

**IRISH FREE STATE  
STERLING COINAGE**



**KM# 1 FARTHING**  
2.8300 g., Bronze, 20.3 mm. **Obv:** Irish harp divides date **Obv. Leg.:** SAORSTAT EIREANN **Rev:** Woodcock below value **Edge:** Plain

Date	Mintage	F	VF	XF	Unc	BU
1928	300,000	0.50	1.50	4.50	10.00	—
1928 Proof; Rare	6,001	Value: 15.00				
1930	288,000	0.75	1.50	4.50	16.50	—
1930 Proof; Rare	—	—	—	—	—	—
1931	192,000	4.50	8.00	15.00	35.00	—
1931 Proof	—	—	—	—	—	—
1932	192,000	5.00	10.00	18.00	45.00	—
1932 Proof; Rare	—	—	—	—	—	—
1933	480,000	0.75	1.50	4.00	16.50	—
1933 Proof; Rare	—	—	—	—	—	—
1935	192,000	5.00	8.00	15.00	35.00	—
1935 Proof; Rare	—	—	—	—	—	—
1936	192,000	5.00	8.00	16.50	37.50	—
1936 Proof; Rare	—	—	—	—	—	—
1937	480,000	0.50	1.50	3.00	14.50	—
1937 Proof; Rare	—	—	—	—	—	—



**KM# 2 1/2 PENNY**  
5.6700 g., Bronze, 25.5 mm. **Obv:** Irish harp divides date **Obv. Leg.:** SAORSTAT EIREANN **Rev:** Sow with piglets below value **Edge:** Plain  
**Date** **Mintage** **F** **VF** **XF** **Unc** **BU**  
1928 2,880,000 0.75 2.00 5.00 15.00 —  
1928 Proof 6,001 Value: 15.00



2010 Standard Catalog of

# WORLD COINS

2001-Date

4th Edition

COLIN R. BRUCE II, SENIOR EDITOR • THOMAS MICHAEL, MARKET ANALYST



**5,500**  
Actual-Size  
Illustrations



*The World's Best-Selling Coin Books*

DVD INCLUDED





The Republic of Iraq, historically known as Mesopotamia, is located in the Near East and is bordered by Kuwait, Iran, Turkey, Syria, Jordan and Saudi Arabia. It has an area of 167,925 sq. mi. (434,920 sq. km.) and a population of 19 million. Capital: Baghdad. The economy of Iraq is based on agriculture and petroleum. Crude oil accounted for 94 percent of the exports before the war with Iran began in 1980.

Mesopotamia was the site of a number of flourishing civilizations of antiquity - Sumeria, Assyria, Babylonia, Parthia, Persia and the Biblical cities of Ur, Nineveh and Babylon. Desired because of its favored location, which embraced the fertile alluvial plains of the Tigris and Euphrates Rivers, Mesopotamia - 'land between the rivers' - was conquered by Cyrus the Great of Persia, Alexander of Macedonia and by Arabs who made the legendary city of Baghdad the capital of the ruling caliphate. Suleiman the Magnificent conquered Mesopotamia for Turkey in 1534, and it formed part of the Ottoman Empire until 1623, and from 1638 to 1917. Great Britain, given a League of Nations mandate over the territory in 1920, recognized Iraq as a kingdom in 1922. Iraq became an independent constitutional monarchy presided over by the Hashemite family, direct descendants of the prophet Mohammed, in 1932. In 1958, the army-led revolution of July 14 overthrew the monarchy and proclaimed a republic.

**MONETARY SYSTEM**

فلساً فلساً فلساً  
Falus, Fulus      Fals, Fils      Falsan

50 Fils = 1 Dirham  
200 Fils = 1 Riyal  
1000 Fils = 1 Dinar (Pound)

**REPUBLIC  
DECIMAL COINAGE**



**KM# 175 25 DINARS**  
2.5000 g., Copper Plated Steel, 17.4 mm. **Obv:** Value **Rev:** Map  
**Edge:** Plain

Date	Mintage	F	VF	XF	Unc	BU
AH1425-2004	—	—	—	0.30	0.75	1.00



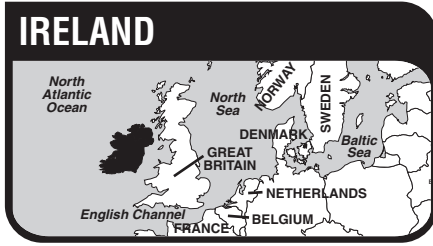
**KM# 176 50 DINARS**  
3.4300 g., Brass Plated Steel, 19.9 mm. **Obv:** Value and legend  
**Rev:** Map **Edge:** Plain

Date	Mintage	F	VF	XF	Unc	BU
AH1425-2004	—	—	—	0.50	1.20	1.60



**KM# 177 100 DINARS**  
4.3000 g., Stainless Steel, 22 mm. **Obv:** Value **Rev:** Map  
**Edge:** Reeded

Date	Mintage	F	VF	XF	Unc	BU
AH1425-2004	—	—	—	0.80	2.00	—



The Republic of Ireland, which occupies five-sixths of the island of Ireland located in the Atlantic Ocean west of Great Britain, has an area of 27,136 sq. mi. (70,280 sq. km.) and a population of 4.3 million. Capital: Dublin. Agriculture and dairy farming are the principal industries. Meat, livestock, dairy products and textiles are exported.

**REPUBLIC  
EURO COINAGE**

European Union Issues



**KM# 32 EURO CENT**  
2.2700 g., Copper Plated Steel, 16.25 mm. **Obv:** Harp  
**Obv. Designer:** Jarlath Hayes **Rev:** Denomination and globe  
**Rev. Designer:** Luc Luyx **Edge:** Plain

Date	Mintage	F	VF	XF	Unc	BU
2002	404,339,788	—	—	—	0.35	—
2003	67,902,182	—	—	—	0.35	—
2004	174,833,634	—	—	—	0.35	—
2005	126,964,391	—	—	—	0.35	—
2006	33,636,085	—	—	—	0.35	—
2006 Proof	5,000	Value: 15.00	—	—	—	—
2007	—	—	—	—	0.35	—
2007 Proof	10,000	Value: 12.00	—	—	—	—
2008	—	—	—	—	0.35	—
2009	—	—	—	—	0.35	—



**KM# 33 2 EURO CENT**  
3.0000 g., Copper Plated Steel, 18.75 mm. **Obv:** Harp  
**Obv. Designer:** Jarlath Hayes **Rev:** Denomination and globe  
**Rev. Designer:** Luc Luyx **Edge:** Plain with groove

Date	Mintage	F	VF	XF	Unc	BU
2002	354,643,386	—	—	—	0.50	—
2003	177,290,034	—	—	—	0.50	—
2004	143,004,694	—	—	—	0.50	—
2005	72,544,884	—	—	—	0.50	—
2006	26,568,597	—	—	—	0.50	—
2006 Proof	5,000	Value: 15.00	—	—	—	—
2007	—	—	—	—	0.50	—
2007 Proof	10,000	Value: 12.00	—	—	—	—
2008	—	—	—	—	0.50	—
2009	—	—	—	—	0.50	—



**KM# 34 5 EURO CENT**  
4.0000 g., Copper-Plated-Steel, 19.60 mm. **Obv:** Harp  
**Obv. Designer:** Jarlath Hayes **Rev:** Denomination and globe  
**Rev. Designer:** Luc Luyx **Edge:** Plain

Date	Mintage	F	VF	XF	Unc	BU
2002	456,270,848	—	—	—	0.75	—
2003	48,352,370	—	—	—	0.75	—
2004	80,354,322	—	—	—	0.75	—
2005	56,454,380	—	—	—	0.75	—
2006	33,588,718	—	—	—	0.75	—
2006 Proof	5,000	Value: 18.00	—	—	—	—
2007	—	—	—	—	0.75	—
2007 Proof	10,000	Value: 15.00	—	—	—	—
2008	—	—	—	—	0.75	—
2009	—	—	—	—	0.75	—

**KM# 35 10 EURO CENT**  
4.0700 g., Aluminum-Bronze, 19.75 mm. **Obv:** Harp  
**Obv. Designer:** Jarlath Hayes **Rev:** Denomination and map  
**Rev. Designer:** Luc Luyx **Edge:** Reeded

Date	Mintage	F	VF	XF	Unc	BU
2002	275,913,000	—	—	—	1.00	—
2003	133,815,907	—	—	—	1.00	—
2004	34,092,712	—	—	—	1.00	—
2005	4,652,786	—	—	—	1.00	—
2006	9,203,411	—	—	—	1.00	—
2006 Proof	5,000	Value: 18.00	—	—	—	—



**KM# 47 10 EURO CENT**  
4.0700 g., Aluminum-Bronze, 19.75 mm. **Obv:** Harp  
**Obv. Designer:** Jarlath Hayes **Rev:** Relief map of Western Europe, stars, lines and value **Rev. Designer:** Luc Luyx  
**Edge:** Reeded

Date	Mintage	F	VF	XF	Unc	BU
2007	—	—	—	—	1.00	—
2007 Proof	10,000	Value: 15.00	—	—	—	—
2008	—	—	—	—	1.00	—
2009	—	—	—	—	1.00	—



**KM# 36 20 EURO CENT**  
5.7300 g., Aluminum-Bronze, 22.25 mm. **Obv:** Harp  
**Obv. Designer:** Jarlath Hayes **Rev:** Denomination and map  
**Rev. Designer:** Luc Luyx **Edge:** Notched

Date	Mintage	F	VF	XF	Unc	BU
2002	234,575,562	—	—	—	1.25	—
2003	57,142,221	—	—	—	1.25	—
2004	32,421,447	—	—	—	1.25	—
2005	37,798,942	—	—	—	1.25	—
2006	10,357,229	—	—	—	1.25	—
2006 Proof	5,000	Value: 20.00	—	—	—	—



**KM# 48 20 EURO CENT**  
5.7300 g., Aluminum-Bronze, 22.25 mm. **Obv:** Harp  
**Obv. Designer:** Jarlath Hayes **Rev:** Relief map of Western Europe, stars, lines and value **Rev. Designer:** Luc Luyx  
**Edge:** Notched

Date	Mintage	F	VF	XF	Unc	BU
2007	—	—	—	—	1.25	—
2007 Proof	10,000	Value: 18.00	—	—	—	—
2008	—	—	—	—	1.25	—
2009	—	—	—	—	1.25	—

**KM# 37 50 EURO CENT**  
7.8100 g., Aluminum-Bronze, 24.25 mm. **Obv:** Harp  
**Obv. Designer:** Jarlath Hayes **Rev. Designer:** Denomination and map **Edge:** Reeded

Date	Mintage	F	VF	XF	Unc	BU
2002	144,144,592	—	—	—	1.50	—
2003	11,811,926	—	—	—	1.50	—
2004	6,748,912	—	—	—	1.50	—
2005	17,253,568	—	—	—	1.50	—
2006	961,135	—	—	—	1.50	—
2006 Proof	5,000	—	—	—	—	—



**KM# 49 50 EURO CENT**  
7.8100 g., Aluminum-Bronze, 24.25 mm. **Obv:** Harp  
**Obv. Designer:** Jarlath Hayes **Rev:** Relief map of Western Europe, stars, lines and value **Rev. Designer:** Luc Luyx  
**Edge:** Reeded

Date	Mintage	F	VF	XF	Unc	BU
2007	—	—	—	—	1.50	—
2007 Proof	10,000	Value: 20.00	—	—	—	—